



# morton.

Wentworth Point 577/4 The Crescent

🛏 2 🚿 2 🚗 1

Perfectly positioned in the highly sought-after Valencia building, one of Wentworth Point's finest, this apartment offers a delightful private and tranquil outlook. A rare opportunity and one that should prove popular, it is a must to inspect.

- Large lounge dining with direct access to spacious balcony
- Fitted kitchen with stone bench tops and stainless steel appliances
- Large master bed with ensuite and built-ins
- Second bathroom with bath tub and laundry
- Ducted air conditioning throughout
- Audio/visual security intercom
- Secure undercover parking space and two storage cages
- Short walk to buses with easy access to Rhodes transport and shopping facilities via Bennelong Bridge
- Building offers exclusive access to a private waterfront pool

### View

As advertised or by appointment

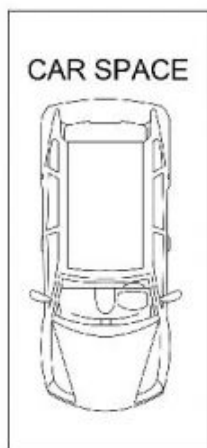
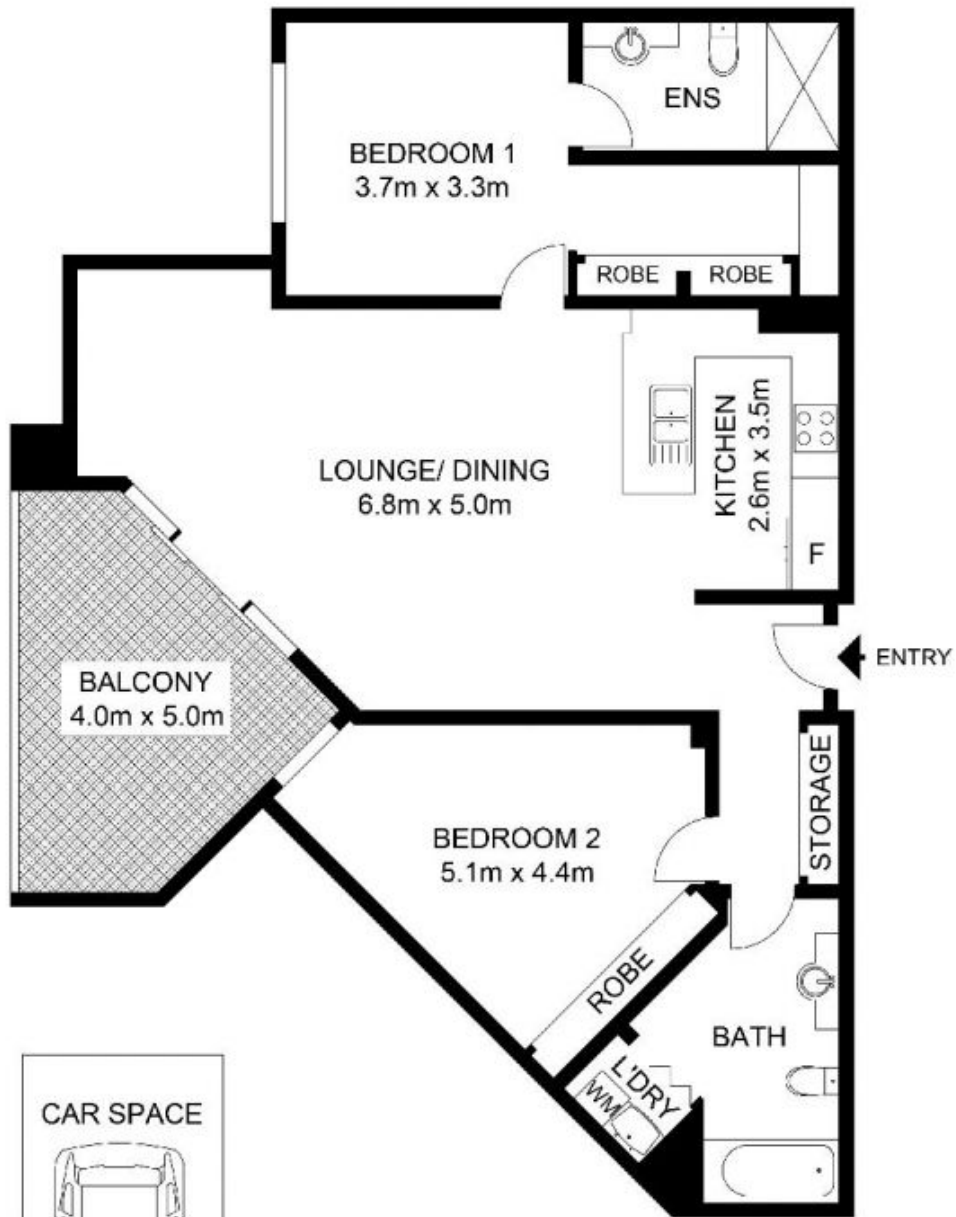
### Agent

**Sarah Fowell**

📞 0437 492 129

✉ rentals@morton.com.au

[morton.com.au](http://morton.com.au)



STORE

INTERNAL : 98 m<sup>2</sup>  
 EXTERNAL : 13 m<sup>2</sup>



# 577/4 The Crescent, WENTWORTH POINT

Not to scale • All measurements are approximate • Drawn for marketing purposes only • Floorplan by © Industrie Media

