



morton.

Wentworth Point 304/1 Half Street

 2  1  1

Located in Quarterdeck, this contemporary 4 year young two bedroom apartment is centrally located to cafes, designated walking trails, shops and the newly built Bennelong Bridge providing many convenient transport options. Wentworth Point is quickly becoming one of Sydney's most desirable waterfront suburbs.

- 2 generous sized bedrooms with split air conditioning
- Open plan lounge and dining areas, 3 balconies
- Stainless steel appliances and gas cooktop
- Separate study area and internal laundry
- Air conditioning and Pet Friendly
- Secure car space and storage cage
- NBN ready

Flowing over 83sqm, this stunning residence is ideally suited to an investor or first home owner looking to enter the market. With the current construction of the Marina Square shopping centre just minutes' walk away, this is fantastic apartment is not to be missed.

morton.com.au

View

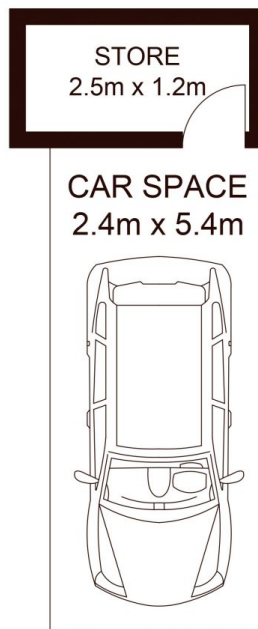
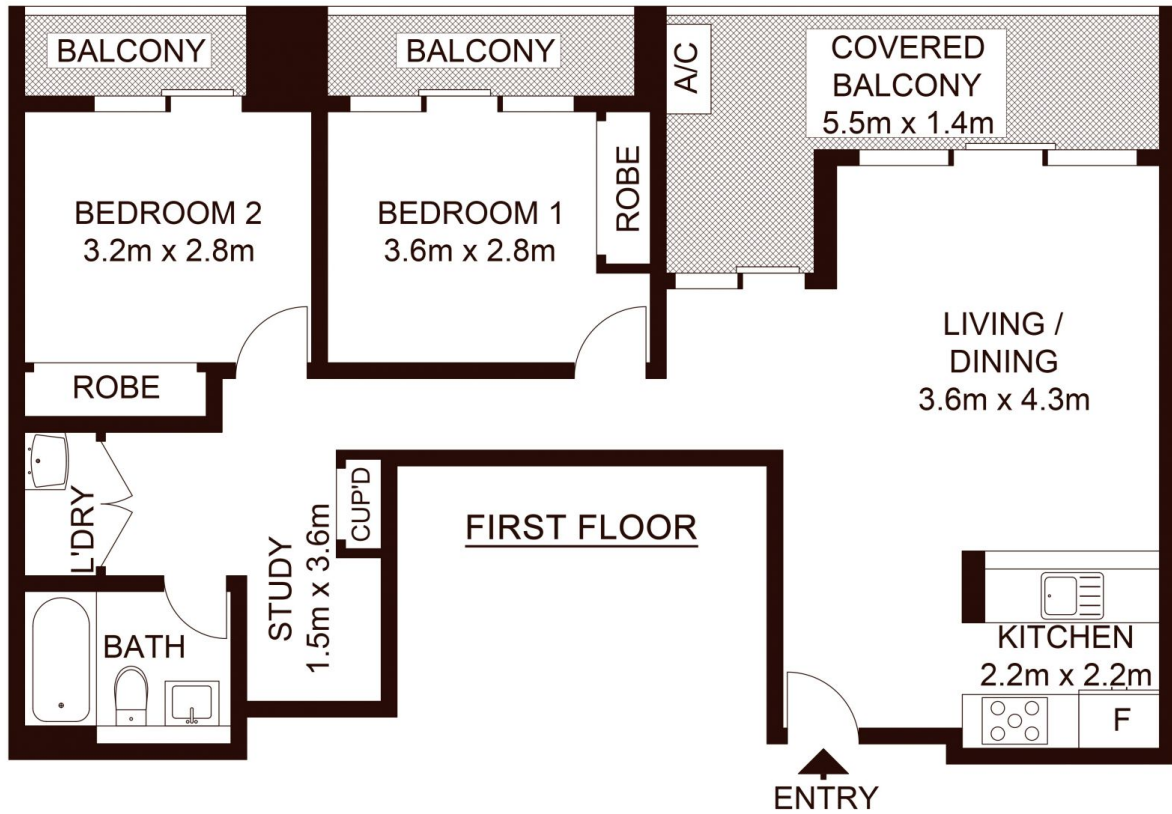
As advertised or by appointment

Agent

Sarah Fowell

 0437 492 129

 rentals@morton.com.au



INTERNAL : 67 m²
 EXTERNAL : 15.7 m²
 STORAGE : 3 m²
 CAR SPACE : 13 m²

morton.

304/1 Half Street, WENTWORTH POINT

Not to scale • All measurements are approximate • Drawn for marketing purposes only • Floorplan by © Industrie Media

