



morton.

Wentworth Point 203/4 The Piazza

🛏 2 🚿 2 🚗 1

Impressively well-proportioned and designed for low maintenance living, this exceptional residence is peacefully set in a boutique harbourside community. Modern, stylish and filled with light, this is the perfect offering for those that demand quality without compromise just metres to the water's edge.

- Dual aspect East/West facing, central garden courtyard
- Generous bedrooms, master boasts built-ins and ensuite
- Well configured interiors flow over approximately 101sqm
- Open plan lounge and dining areas, European laundry
- Sleek gourmet kitchen, stone benches, gas appliances
- Spacious entertaining balcony, soaring ceilings, security
- Resort facilities include pool, gym, library and tennis courts
- Just metres to cafes, shops and a bustling village lifestyle
- Perfectly suited to the investor, couple, first home buyer

View

As advertised or by appointment

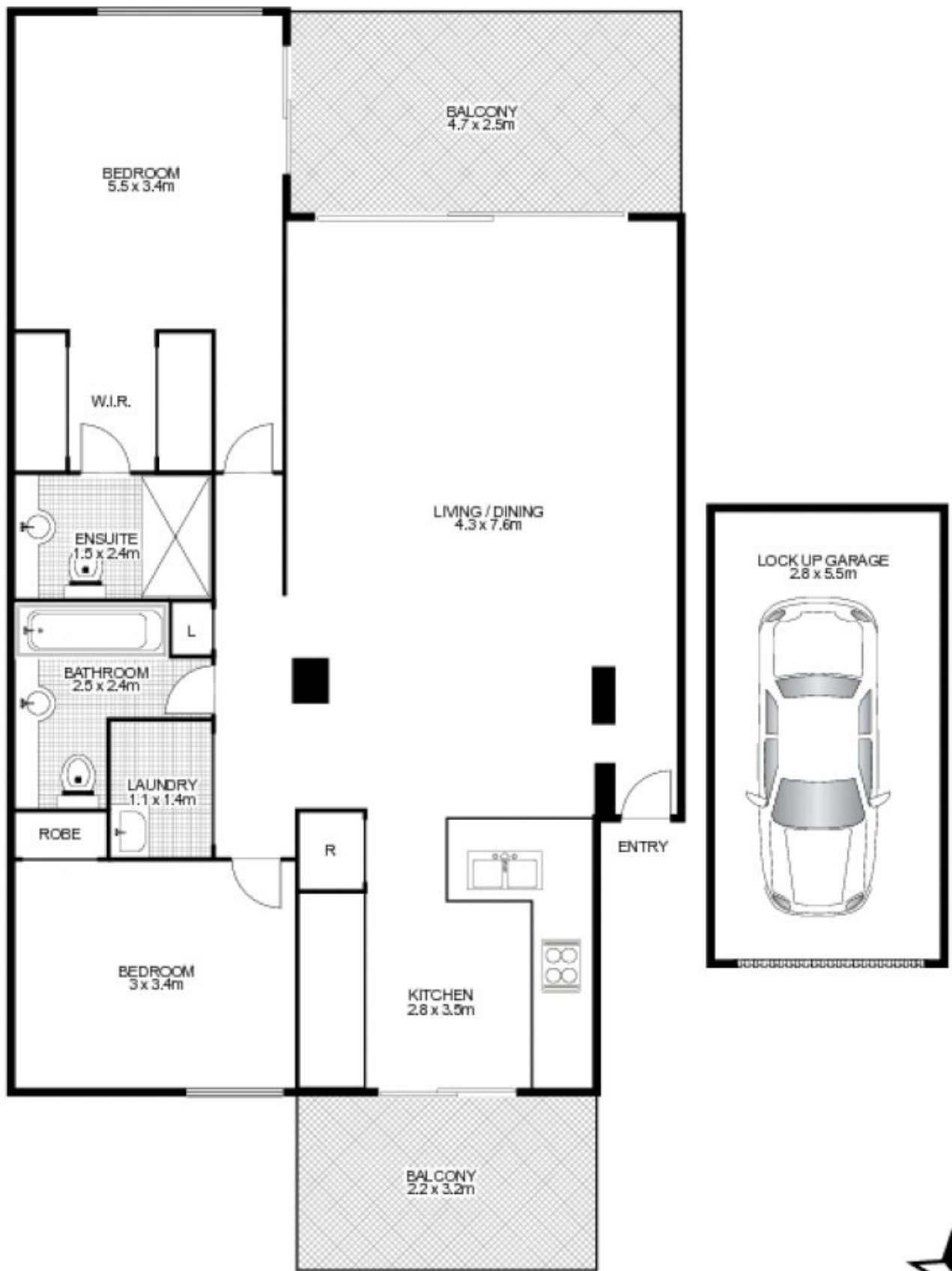
Agent

Sarah Fowell

📞 0437 492 129

✉ rentals@morton.com.au

morton.com.au



203/4 The Piazza, WENTWORTH POINT



This floor plan is intended as a guide only. Layout dimensions are approximate only. No representations or warranties of any nature whatsoever are given or intended. Any person using this information should rely on their own enquiries. Floor Plans by SURROUNDPIX.