



morton.

Surry Hills 610/105 Campbell Street



Bathed in natural light and capturing sweeping city views from its prized position high on the sixth floor of one of Surry Hills' most iconic buildings, The Carlisle. This is a superb offering indeed. Well proportioned and ideal for the investor or first time owner, it is literally minutes to Oxford Street and the city centre.

- Designed for effortless indoor/outdoor living
- Large 50m2 Studio with mirrored built-ins
- Open plan, sun washed balcony
- Kitchen complete with stone benches, dishwasher and gas stove
- Integrated laundry facilities, air conditioning, floating timber floors
- Resort style facilities including gym, heated pool, spa and sauna
- Pet Friendly building, exclusive use of large storage cage in basement

View

As advertised or by appointment

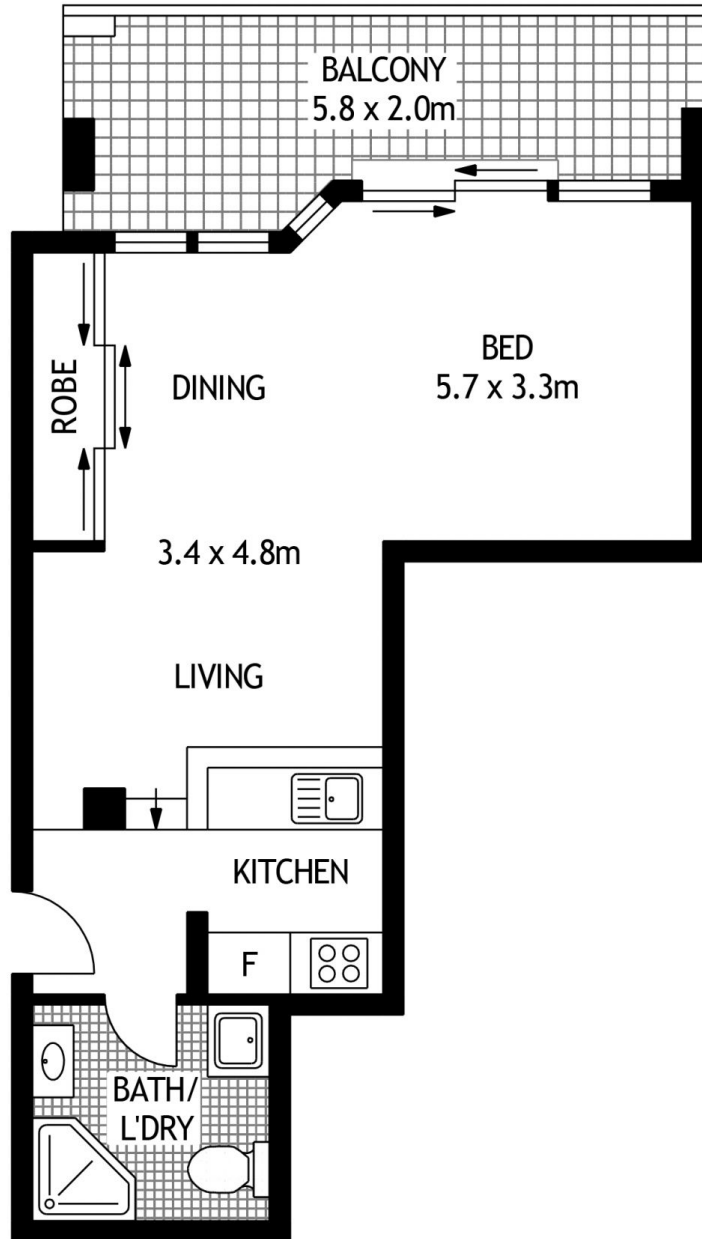
Agent

Ettiene West

📞 0410 593 749

✉️ ettiene@morton.com.au

morton.com.au



SIXTH FLOOR

610/105 CAMPBELL STREET

SURRY HILLS

SCAPE Floor Planing Disclaimer: This floor plan is conceptual only. it is provided for illustrative purposes only and should not be relied upon. We make no guaranteeas to the correctness of this plan. All interested parties should make and rely on their own enquiries in determining the accuracy of the information contained in this floor plan.