



# morton.

**Chiswick** 15/1 Blackadder Close

 2  2  1

### View

As advertised or by appointment

### Agent

**Ettiene West**

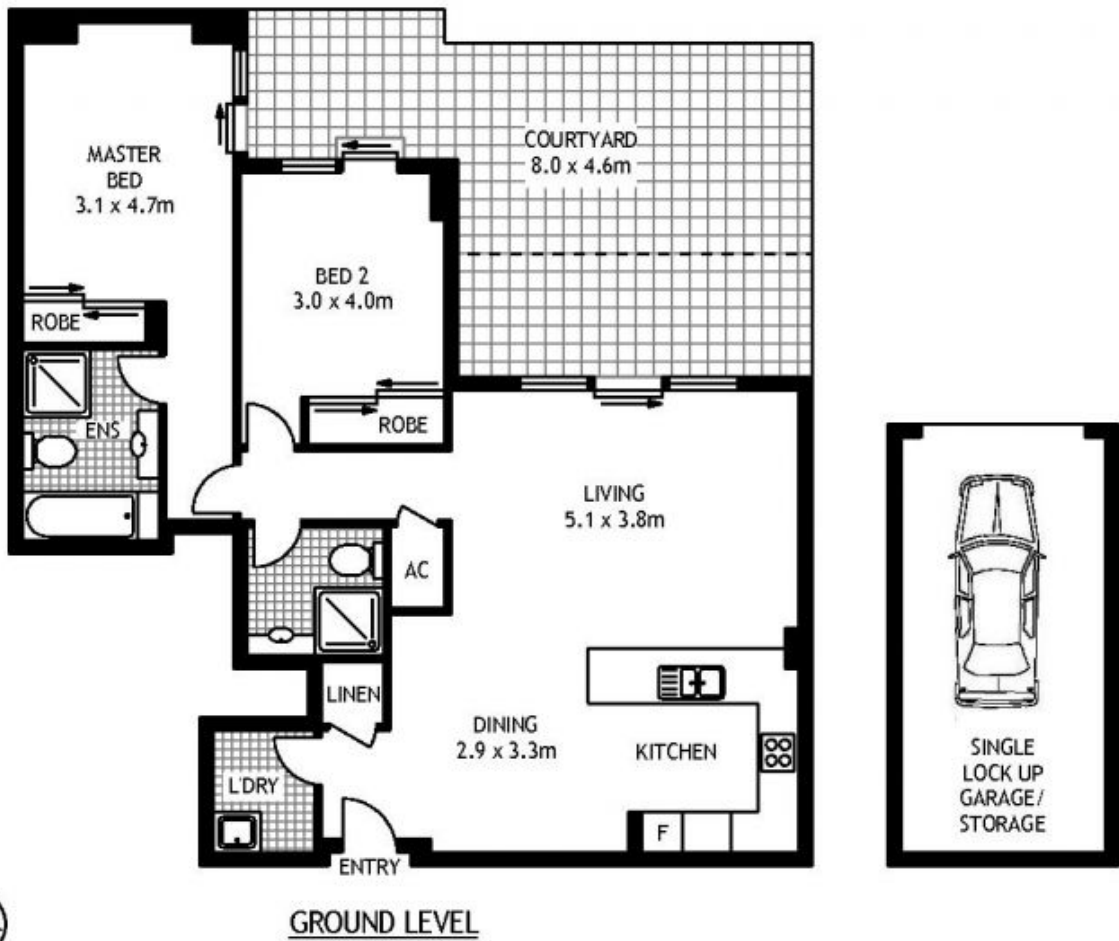
 0410 593 749

 [ettiene@morton.com.au](mailto:ettiene@morton.com.au)

In what is undoubtedly one of Sydney's premier harbourside developments, this inviting garden apartment offers contemporary living at its finest. Perfect for the professional couple or investor that seeks entry into an exclusive community, it is merely a short and pleasant stroll to the water's edge.

- Well presented, ideally low maintenance interiors
- Sleek kitchen, gas appliances and granite benches
- Generous garden courtyard is ideal for entertaining
- Spacious master with ensuite and mirrored built-ins
- Indoor and outdoor pools, gym, sauna, tennis court
- High ceilings, ducted air con, library, games room
- Building manager, 24 hour security, video intercom
- Secure lock-up garage

[morton.com.au](http://morton.com.au)



15/1 BLACKADDER CLOSE

CHISWICK

SCAPE Floor Planning Disclaimer: This floor plan is conceptual only. It is provided for illustrative purposes only and should not be relied upon. We make no guarantees to the correctness of this plan. All interested parties should make and rely on their own enquiries in determining the accuracy of the information contained in this floor plan.