



morton.

Sydney 34/137 Bathurst Street

🛏 3 🚿 2 🚗 1

Exceptionally well proportioned with an intuitive floorplan that flows over 138sqm and a desirable northern aspect, this welcoming apartment epitomises effortless contemporary city living. Immaculately updated, the residence enjoys a prime sub-penthouse position in an exceedingly tightly-held community.

- A boutique building with only 2 apartments on floor
- Double bedrooms have built-ins, master has an ensuite
- Flowing open interiors, glimpses of historic Hyde Park
- Modern CaesarStone kitchen, stainless gas appliances
- Large study, newly carpeted and painted throughout
- Tandem parking, storage cage, barbecue balconies
- 14m2 car space + 9m2 storage space + 3m2 storage cage, barbecue balconies

View

As advertised or by appointment

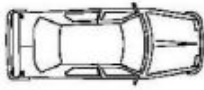
Agent

Ettiene West

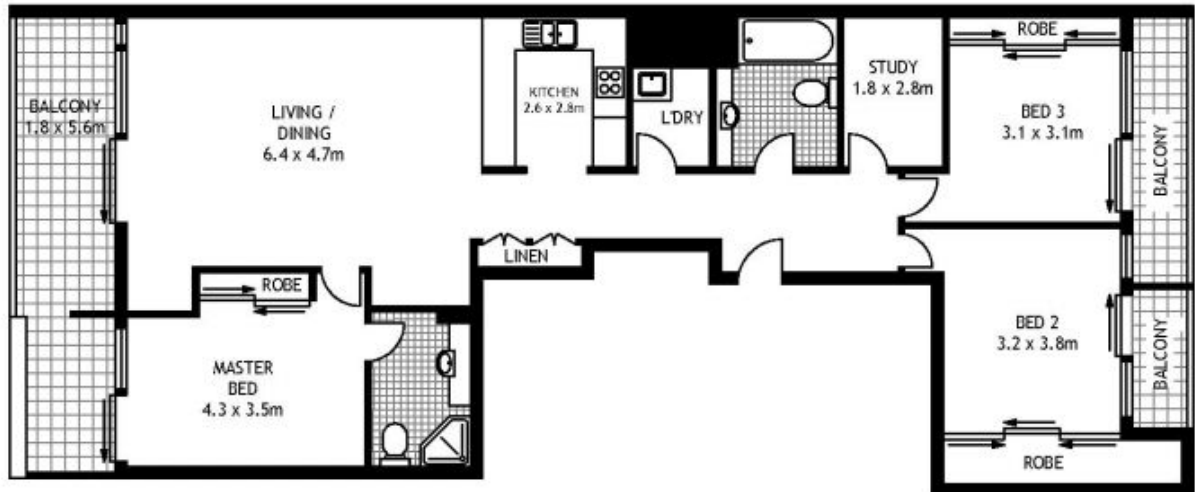
📞 0410 593 749

✉ ettiene@morton.com.au

morton.com.au



STORAGE
CAGE



LEVEL THIRTEEN



34/137 BATHURST STREET

SYDNEY

SCAPE Floor Planning Disclaimer: This floor plan is conceptual only. It is provided for illustrative purposes only and should not be relied upon. We make no guarantee to the correctness of this plan. All interested parties should make and rely on their own enquiries in determining the accuracy of the information contained in the floor plan.