



# morton.

**Waterloo** 5.14/830 Elizabeth Street

 2  2  1

Offering the perfect balance of a timeless heritage building, industrially inspired designs, and bespoke apartments; Sydney's latest development 'Iconic' has set a new standard in living within Waterloo. The development consists of 76 beautifully designed apartments, offering residents:

- Contemporary modular designs, combining the best in raw solid materials and a modernised, fresh look
- Warehouse conversion within the 100 year old 'Chubb Safe factory'
- Huge private roof top terrace with Pegola and oversized plunge pool all on title
- Bespoke cabinetry throughout each kitchen, bathroom, and bedroom
- A convenient location, placed in close proximity to the heart of Sydney's CBD
- A range of options in transport, being within 500m of Green Square Train Station
- Easy access to Sydney's most vibrant, and artistic shopping destinations

### View

As advertised or by appointment

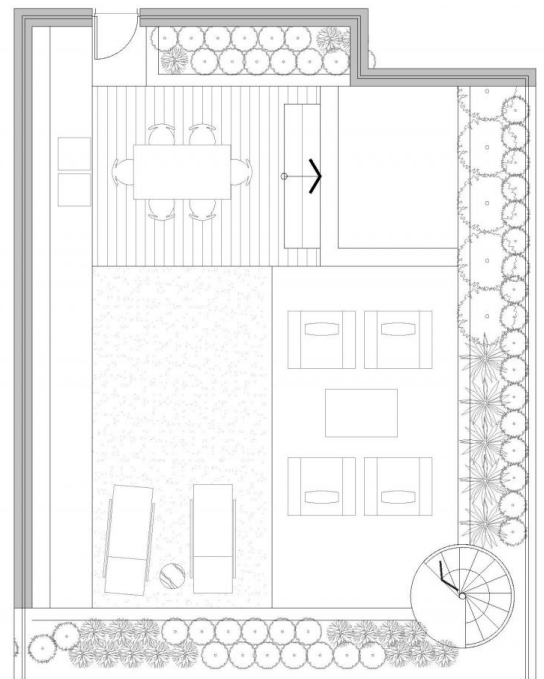
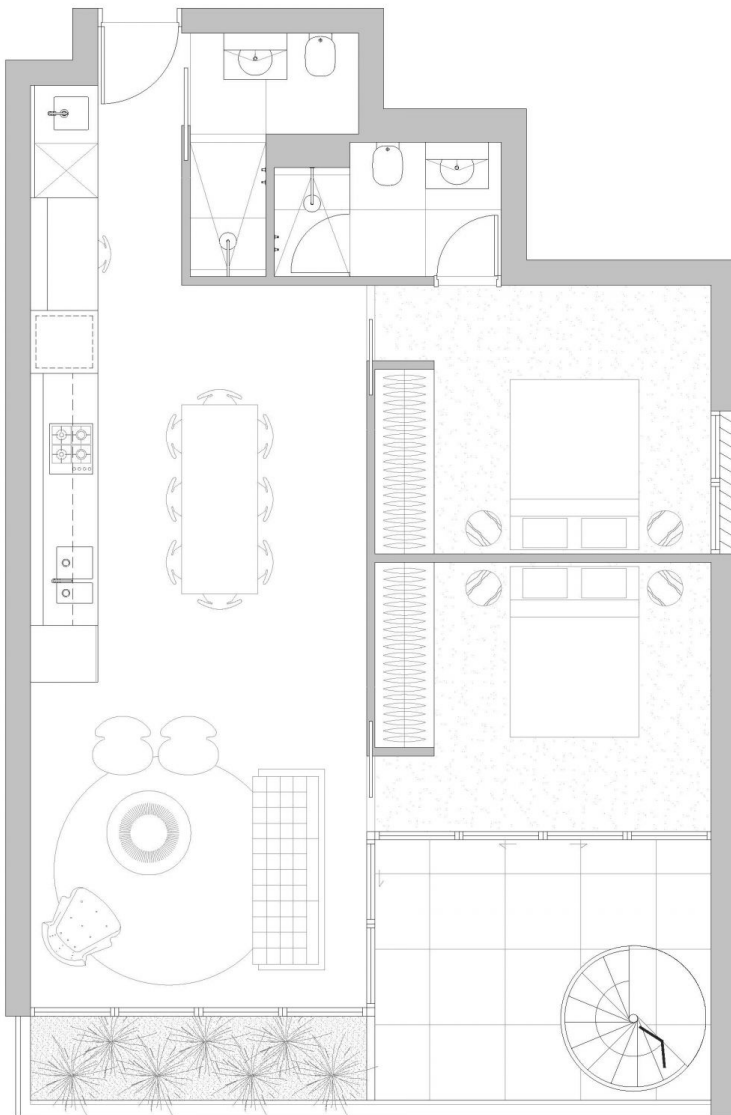
### Agent

**Sarah Fowell**

 0437 492 129

 sarah@morton.com.au

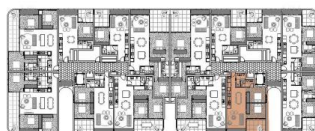
[morton.com.au](http://morton.com.au)



^ Terrace (not to scale)

**APARTMENT**

5.14



level 5



ELIZABETH STREET

Bedrooms:	2
Bathrooms:	2
Carspace:	1
Internal area:	76 sqm
External area:	100 sqm
Total area:	176 sqm



**CBRE**