



# morton.

**Waterloo** 5.05/830 Elizabeth Street

🛏 2 🚿 2 🚗 1

Offering the perfect balance of a timeless heritage building, industrially inspired designs, and bespoke apartments; Sydney's latest development 'Iconic' has set a new standard in living within Waterloo. Masterfully created architecture and interiors by SJB (with styling by Coco-Republic), Iconic Waterloo has embraced its status as a boutique development by maintaining the building's heritage as well as introducing industrial and luxury elements; thus establishing something truly amazing for Sydney's property market. The development consists of 76 beautifully designed apartments, offering residents:

- Contemporary modular designs, combining the best in raw solid materials and a modernised, fresh look
- Warehouse conversion within the 100 year old 'Chubb Safe factory'
- Huge private roof top terrace with Pergola and oversized plunge pool all on title
- Bespoke cabinetry throughout each kitchen, bathroom, and bedroom

[morton.com.au](http://morton.com.au)

### View

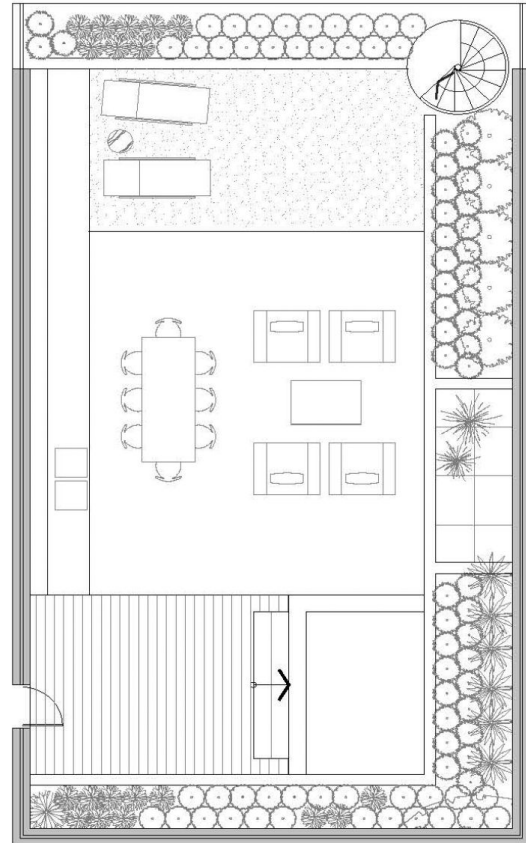
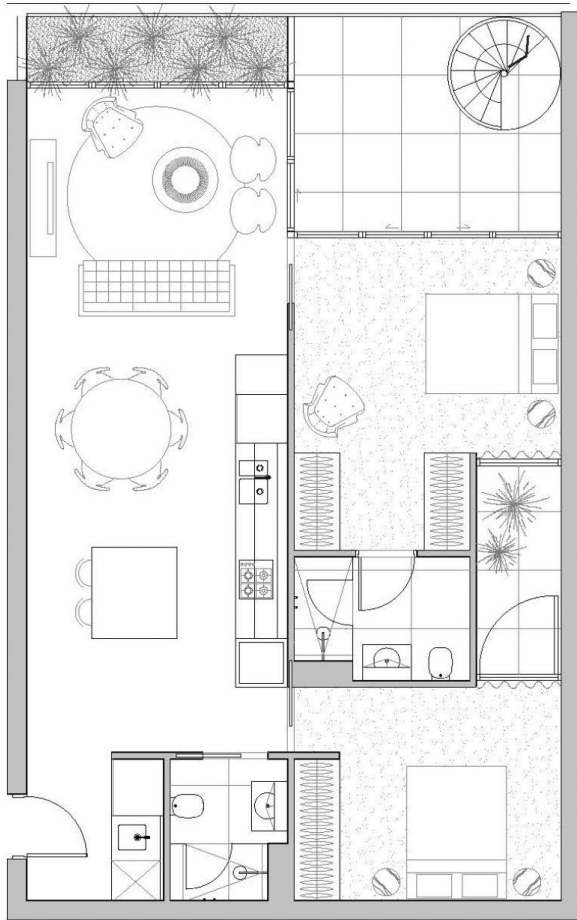
As advertised or by appointment

### Agent

**Sarah Fowell**

📞 0437 492 129

✉ [sarah@morton.com.au](mailto:sarah@morton.com.au)



^ Terrace

## APARTMENT

### 5.05



Bedrooms:	2
Bathrooms:	2
Carspace:	1
Internal area:	93 sqm
Outdoor area:	140 sqm
Total area:	233 sqm

**Disclaimer:** Floor Plan measurements are approximate and are for illustrative purposes only. While we do not doubt the floor plans accuracy, we make no guarantee, warranty or representation as to the accuracy and completeness of the floor plan. Please refer to the 'draft strata plan' for precise measurements of each floor plan within the ICONIC Development.