



morton.

Zetland 530/8 Victoria Park Parade

 2  2  1

Boasting an array of light coupled with luxurious living, this Platinum apartment presents flowing open spaces, polished interiors, high quality finishes and the perfect metropolitan address. Just 3km to the CBD and a short walk to the vibrant dining and retail precinct of East Village, this residence is a superb investment ready to go or a rewarding first step on the property ladder.

- 5th floor secure apartment
- Spacious 85sqm layout with open plan living and dining
- Private alfresco balcony with district views
- Sleek integrated Miele kitchen with stone bench tops
- Bright and peaceful bedrooms with built-in robes
- Additional area ideal for study/home office
- Designer bathroom; LED lights throughout; Hideaway laundry
- Security video intercom and lift access; Single secure car space
- Resident's pool, gymnasium, steam and massage rooms

View

As advertised or by appointment

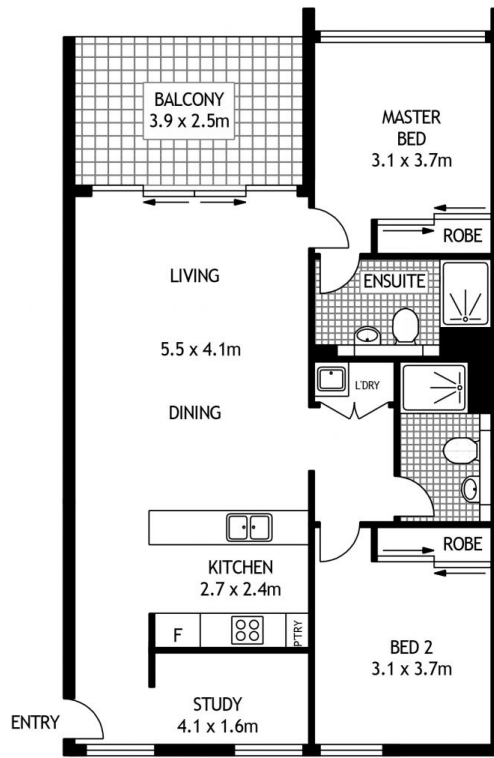
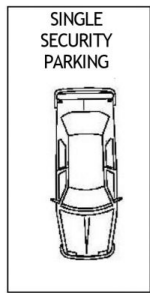
Agent

Sarah Fowell

 0437 492 129

 sarah@morton.com.au

morton.com.au



FIFTH FLOOR



530/8 VICTORIA PARK PDE

ZETLAND

SCAPE Floor Planing Dtsclaimer: This floor plan is conceptual only. it is provided for illustrative purposes only and should not be relied upon. We make no guarantees to the correctness of this plan. All interested parties should make and rely on their own enquiries in determining the accuracy of the information contained in this floor plan.