



# morton.

**Zetland** 1306/3 George Julius Avenue

 2  2

This flawless apartment is the epitome of designer style. Located in what is generally considered to be one of the east's most vibrant lifestyle precincts, this spacious apartment presents a premier opportunity for the couple or investor alike.

- An exclusive offering finished to the highest standard
- Impeccably appointed for low maintenance living
- Generous master with built-in wardrobe, study alcove
- Chic CaesarStone kitchen has stainless gas appliances
- Inviting open plan lounge and dining space
- Large balcony, spa, pool, gym, common BBQ area
- Ducted air conditioning, European laundry and security

### View

As advertised or by appointment

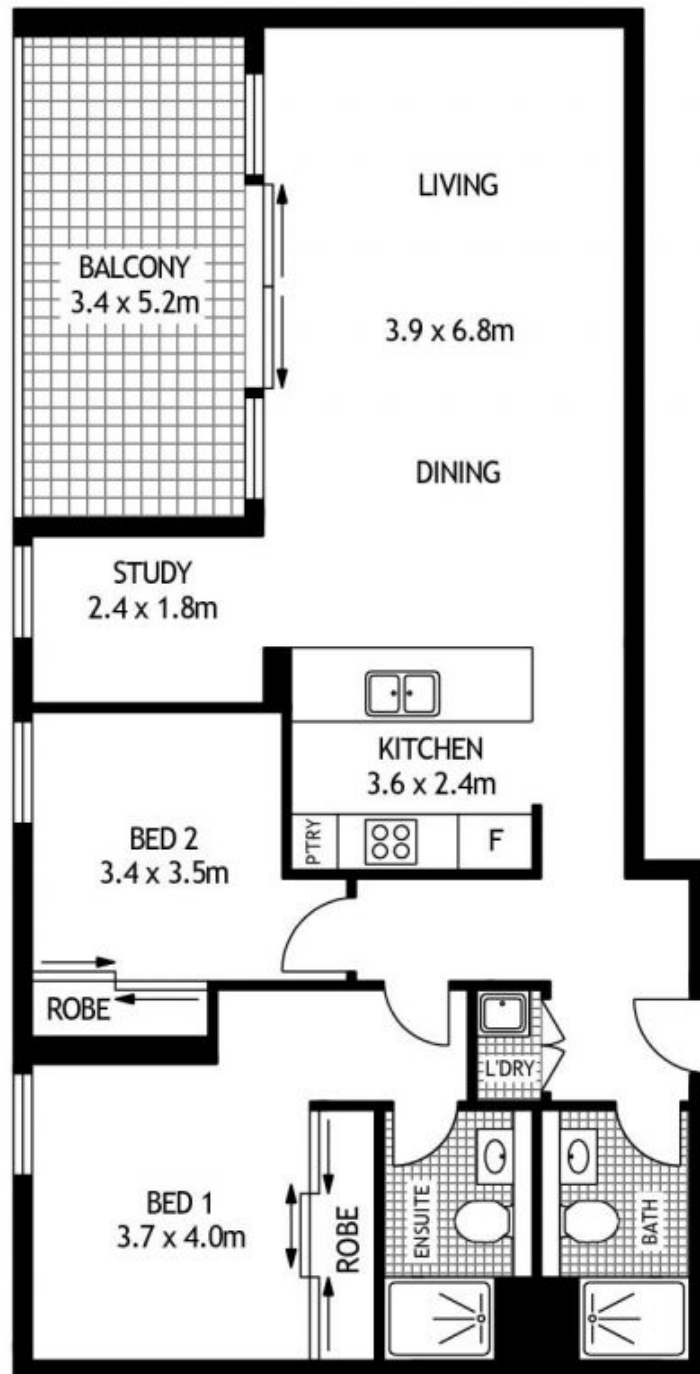
### Agent

**Sarah Fowell**

 0437 492 129

 sarah@morton.com.au

[morton.com.au](https://morton.com.au)



THIRTEENTH FLOOR



1306/3 GEORGE JULIUS AVENUE

ZETLAND

SCAPE Floor Planing Disclaimer: This floor plan is conceptual only. it is provided for illustrative purposes only and should not be relied upon. We make no guarantees to the correctness of this plan. All interested parties should make and rely on their own enquiries in determining the accuracy of the information contained in this floor plan.