



morton.

Zetland 809/1 Hutchinson Walk

 2  2  1

Located in the vibrant Victoria Park precinct, just 3km from the CBD, the new Platinum development by Payce is sophisticated urban living at its best. Platinum's five buildings surround a beautifully landscaped 1,930sqm elevated garden incorporating an alfresco dining and barbecue area, intimate pavilions for relaxing and an Asian-inspired bamboo grove.

- State of the art health club featuring pool, gymnasium, steam and massage rooms
- Stainless steel Miele appliances
- LED lighting throughout
- Stone bench tops, mirrored splash back
- Data/TV points in living and main bedroom
- Security building, Video intercom
- Air conditioning throughout
- 1 car space

View

As advertised or by appointment

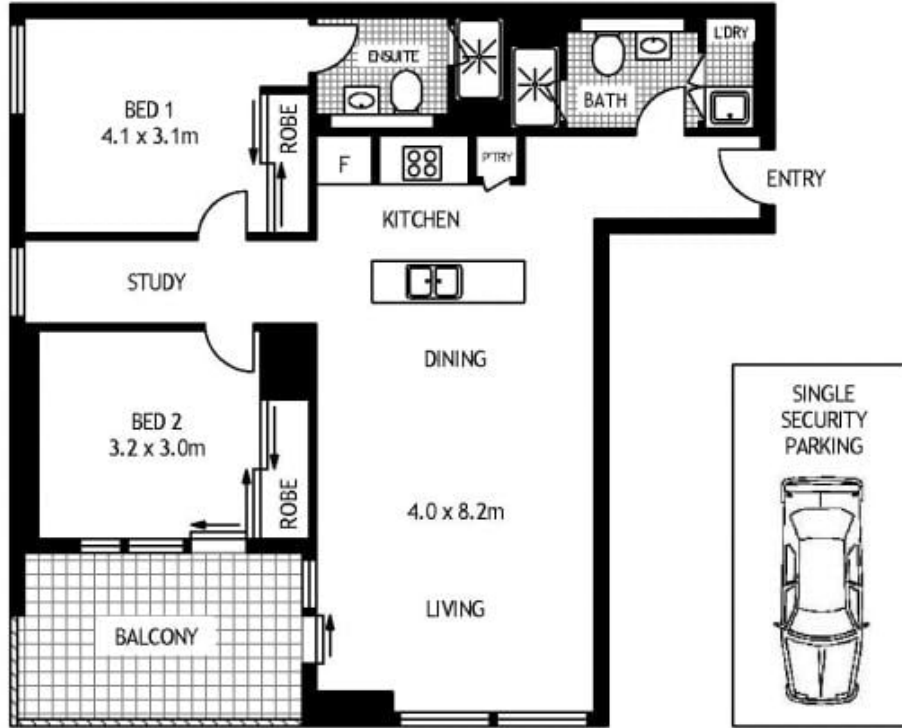
Agent

Sarah Fowell

 0437 492 129

 sarah@morton.com.au

morton.com.au



EIGHTH FLOOR



809/1 HUTCHINSON WALK

ZETLAND

SCAPE Floor Planing Disclaimer: This floor plan is conceptual only. It is provided for illustrative purposes only and should not be relied upon. We make no guarantees to the correctness of this plan. All interested parties should make and rely on their own enquiries in determining the accuracy of the information contained in this floor plan.