



# morton.

**Waterloo** 1.07/830 Elizabeth Street



Offering the perfect balance of a timeless heritage building, industrially inspired designs, and bespoke apartments; Sydney's latest development 'Iconic' will set a new standard in living within Waterloo. Due for completion by the end of 2017, the Iconic's development is well underway! Masterfully created architecture and interiors by SJB (with styling by Coco-Republic), Iconic Waterloo will embrace its status as a boutique development by maintaining the building's heritage as well as introducing industrial and luxury elements; thus establishing something truly amazing for Sydney's property market. The development will consist of 76 beautifully designed apartments, offering residents:

- Contemporary modular designs, combining the best in raw solid materials, and a modernised, fresh look
- Bespoke cabinetry throughout each kitchen, bathroom, and bedroom
- A convenient location, placed in close proximity to the heart of Sydney's CBD
- A range of options in transport, being within 500m of Green

[morton.com.au](http://morton.com.au)

#### View

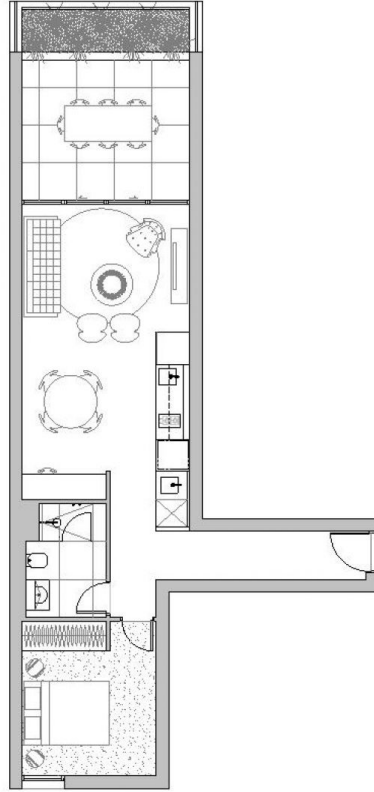
As advertised or by appointment

#### Agent

**Sarah Fowell**

📞 0437 492 129

✉ [sarah@morton.com.au](mailto:sarah@morton.com.au)



## APARTMENT 4.07



Bedrooms:	1
Bathrooms:	1
Carspace:	0
Internal area:	55 sqm
Outdoor area:	18 sqm
Total area:	73 sqm



level 4

**Disclaimer:** Floor Plan measurements are approximate and are for illustrative purposes only. While we do not doubt the floor plans accuracy, we make no guarantee, warranty or representation as to the accuracy and completeness of the floor plan. Please refer to the 'draft strata plan' for precise measurements of each floor plan within the ICONIC Development.