



# morton.

**Waterloo** 5.11/830 Elizabeth Street

 2  2  1

This is your chance to secure the very last apartment in this development, which must sell prior to completion. Please contact the agent to register your interest or to attend a site inspection.

Offering the perfect balance of a timeless heritage building, industrially inspired designs, and bespoke apartments; Sydney's latest development 'Iconic' has set a new standard in living within Waterloo.

- Contemporary modular designs, combining the best in raw solid materials and a modernised, fresh look
- Warehouse conversion within the 100 year old 'Chubb Safe factory'
- Huge private roof top terrace with Pergola and oversized plunge pool all on title
- Bespoke cabinetry throughout each kitchen, bathroom, and bedroom
- A convenient location, placed in close proximity to the heart of Sydney's CBD

[morton.com.au](https://morton.com.au)

### View

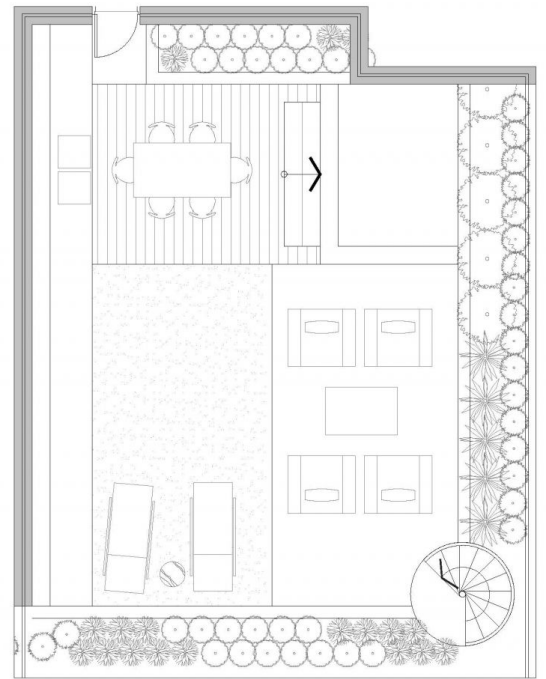
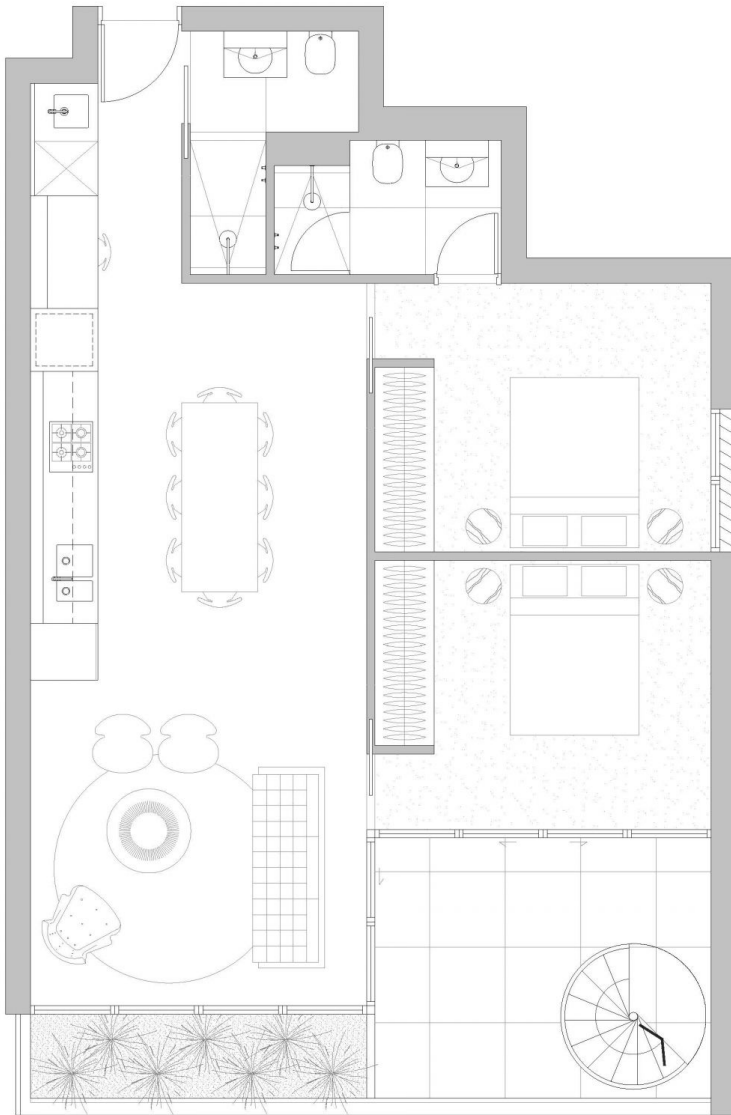
As advertised or by appointment

### Agent

**Sarah Fowell**

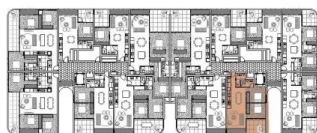
 0437 492 129

 [sarah@morton.com.au](mailto:sarah@morton.com.au)



^ Terrace (not to scale)

**APARTMENT**  
5.11



level 5



ELIZABETH STREET

Bedrooms:	2
Bathrooms:	2
Carspace:	1
Internal area:	76 sqm
External area:	100 sqm
Total area:	176 sqm



**CBRE**

Disclaimer: Floor Plan measurements are approximate and are for illustrative purposes only. While we do not doubt the floor plans accuracy, we make no guarantee, warranty or representation as to the accuracy and completeness of the floor plan. Please refer to the 'draft strata plan' for precise measurements of each floor plan within the ICONIC Development.