



morton.

Zetland 827/2B Defries Avenue

 1  1  1

East Village is located in the hub of Victoria Park, offering resort-style apartment living and featuring the largest private Sky Park in Sydney. East Village also offers instant access to a lively marketplace below, and is just 3kms to the CBD.

- Reverse cycle air conditioning
- Stainless steel Smeg appliances
- Soft close kitchen draws and cupboards
- Stone bench tops, mirror splash back
- LED under cupboard lighting
- Wool carpets, efficient LED down lights
- Gas bayonet to balcony for your BBQ
- Data/TV points in living and main bedroom
- Recessed mirrored cabinets in bathroom
- Security building, video intercom

View

As advertised or by appointment

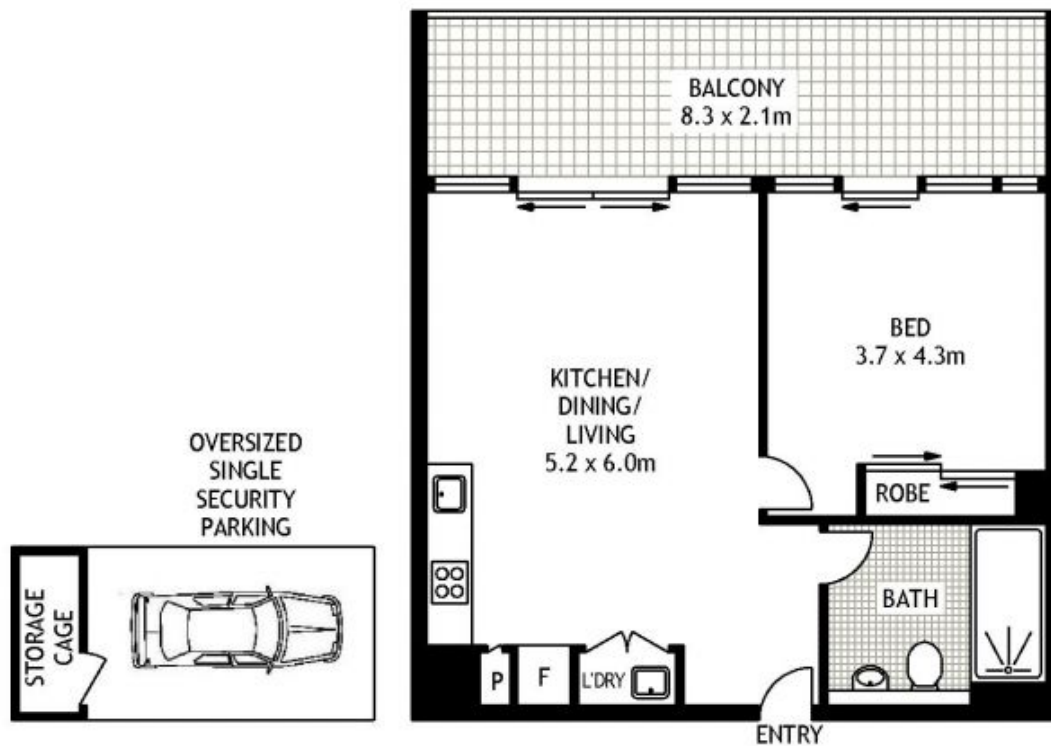
Agent

Sarah Fowell

 0437 492 129

 sarah@morton.com.au

morton.com.au



827/2 DEFRIES AVENUE

ZETLAND

SCAPE Floor Planing Disclaimer: This floor plan is conceptual only. It is provided for illustrative purposes only and should not be relied upon. We make no guarantees to the correctness of this plan. All interested parties should make and rely on their own enquiries in determining the accuracy of the information contained in this floor plan.