



morton.

Little Bay 1/6 Darwin Avenue



Located just 20 minutes from Sydney CBD and just ten minutes walk from Little Bay Beach, East Village comprises a unique collection of superbly restored landmark heritage buildings. This beautiful single story apartment features water glimpses, elegant stylish space, soaring four metre high ceilings and modern features.

- Stylish designer separate kitchen and bathroom
- High ceilings and grand windows maximise light and airflow
- Designer lights, built in robes & internal laundry
- Quality woolen carpets & stylish tiles throughout
- Car space and huge basement storage
- Two east facing sunny balconies with water glimpses
- Private entry off Ewing Avenue

View

As advertised or by appointment

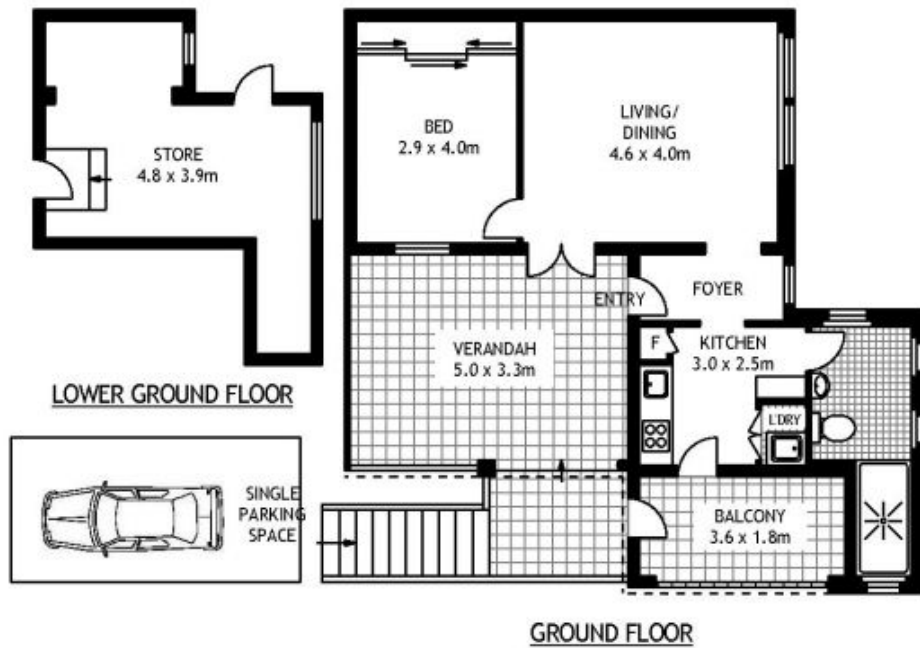
Agent

Sarah Fowell

📞 0437 492 129

✉️ sarah@morton.com.au

morton.com.au



16 DARWIN AVENUE

LITTLE BAY

SCALE Floor Planning Disclaimer: This floor plan is conceptual only, it is provided for illustrative purposes only and should not be relied upon. We make no guarantees to the correctness of this plan. All interested parties should make and rely on their own enquiries in determining the accuracy of the information contained in this floor plan.