



morton.

Zetland 812/1 Hutchinson Walk

🛏 1 🚿 1 🚗 1

Set in the prestigious 'Platinum' building, this beautiful north facing, eighth floor apartment offers high ceilings with immense potential to revitalize into a modern home. Basking in park views, it's unrivaled location is just 3km to the CBD and a short walk to the vibrant dining and retail precinct of East Village, this residence is a superb investment ready to go or a rewarding first step on the property ladder.

- 8th floor apartment with picturesque outlook
- Spacious 60sqm layout with open plan living and dining
- Private alfresco balcony with district views
- Sleek integrated Miele kitchen with stone bench tops
- Bright and peaceful bedroom with built-in robes
- Designer bathroom; LED lights throughout; Hideaway laundry
- Security video intercom and lift access; Single secure car space
- Resident's pool, gymnasium, steam and massage rooms

View

As advertised or by appointment

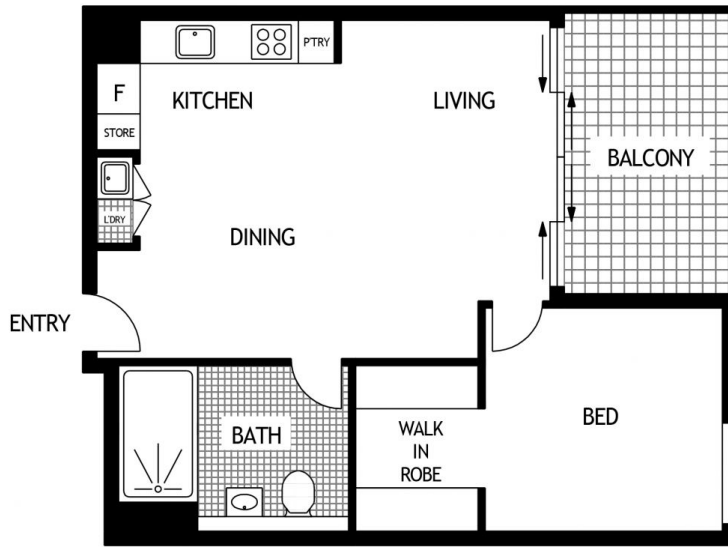
Agent

Sarah Fowell

📞 0437 492 129

✉ sarah@morton.com.au

morton.com.au



LEVEL EIGHT



812/1 HUTCHINSON WALK

ZETLAND

SCAPE Floor Planing Disclaimer: This floor plan is conceptual only, it is provided for illustrative purposes only and should not be relied upon. We make no guarantee to the correctness of this plan. All interested parties should make and rely on their own enquiries in determining the accuracy of the information contained in this floor plan.