



morton.

Bondi Junction 1402/253-255 Oxford Street

 2  2  1

Located in the newly completed Capitol building at Bondi Junction, this perfectly positioned apartment enjoys a spectacular outlook toward Sydney CBD including sweeping ocean views. This building enjoys the outstanding lifestyle options the East is renowned for.

- Cleverly configured interiors to maximise space
- Spectacular North East views of CBD and out to Bondi Junction
- Large master bedroom with built-in wardrobes and ensuite
- Reverse cycle ducted air conditioning
- Kitchen with Caesarstone bench tops, mirrored splashbacks and Miele appliances
- Open plan living/dining with bi-fold doors flowing onto an entertainers balcony
- Separate study/media area
- Beautifully designed bathrooms with Honed Cararra Gioia marble
- Oak Chalet timber floors
- Broadloom carpet in bedrooms

View

As advertised or by appointment

Agent

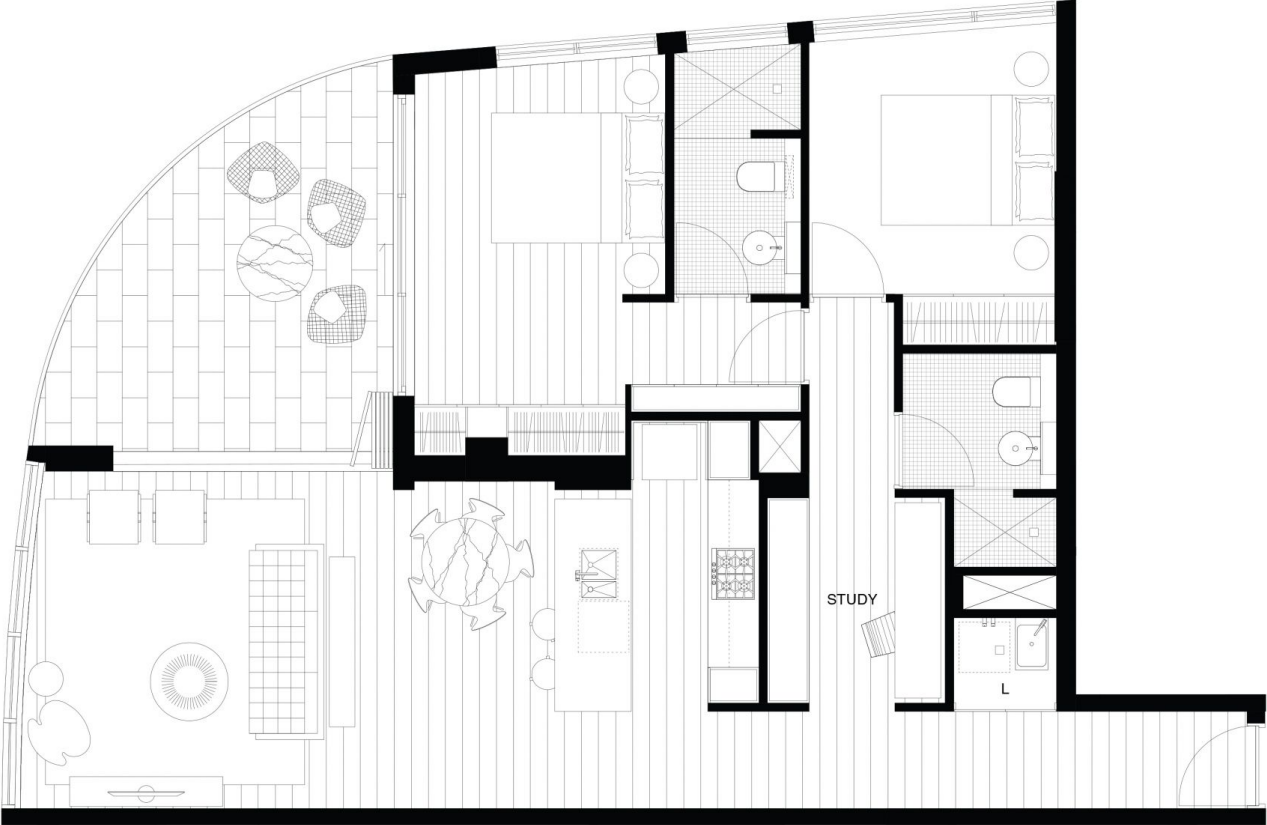
Sarah Fowell

 0437 492 129

 sarah@morton.com.au

morton.com.au

1402/253 Oxford Street, Bondi Junction



Internal area: 87sqm approx
External area: 15sqm approx
Total area: 102sqm approx

