

# morton.

**Bondi Junction** 1001/253-255 Oxford Street

🛏 2 🚿 2 🚗 1

Capitol is perfectly positioned to enjoy the outstanding lifestyle options that the east is renowned for, with spectacular views toward the CBD, and featuring an exceptionally elegant and timeless design by BKH.

- Cleverly configured interiors maximise space
- Superb North West facing views toward CBD
- Reverse cycle ducted air conditioning
- Caesarstone bench tops and polyurethane cabinetry
- Mirrored splashbacks and European appliances
- Honed Cararra Gioia marble in bathrooms
- Oak Chalet Grey stained timber floors
- Broadloom carpet in bedrooms
- Internal laundry, study/media space and storage cage
- Lift access and retail space on lower levels
- Rooftop BBQ and garden area

## View

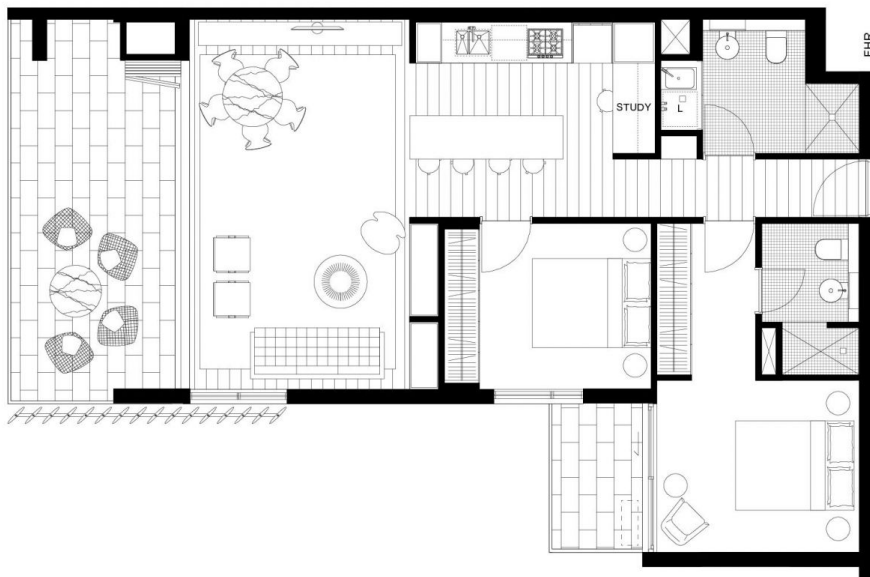
As advertised or by appointment

## Agent

**Sarah Fowell**

📞 0437 492 129  
✉ sarah@morton.com.au

**morton.com.au**



Disclaimer: This plan is guide only and does constitute an offer or contract. Please note charges may be made during the development and areas, fittings, fixtures and specifications are subject to change without notice in accordance with the terms of the contract of sale. All parties must rely on their own investigation to validate this information as it is not guaranteed. No liability will be accepted for any inaccuracy misstatement.

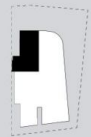
**CAPITOL**  
BONDI JUNCTION

**LEVEL 6-19**

**APT 6.01, 7.01, 8.01, 9.01, 10.01, 11.01, 12.01,  
13.01, 14.01, 15.01, 16.01, 17.01, 18.01, 19.01**

**2 BED + MEDIA**

Internal area	81sqm
External area	22sqm
<b>Total</b>	<b>103sqm</b>



[www.capitolbondi.com.au](http://www.capitolbondi.com.au)  
**1800 66 33 95**