





# morton.

**Woolloomooloo** 458/6 Cowper Wharf Roadway

 1  1

Opening to embrace spectacular views that stretch uninterrupted across the marina to the Royal Botanic Gardens and beyond to the impressive cityscape, this stylish studio apartment offers a quality low maintenance lifestyle. Bathed in afternoon sun, this is an offering ideal for the investor or owner alike.

- Well presented, understated contemporary finishes
- Stylish gas kitchen is complete with granite benches
- Soothed by cooling harbour breezes throughout
- With an inviting open entertaining space/bedroom
- Iconic community, great investment opportunity
- Reverse air conditioning, floor to ceiling glass windows

## View

As advertised or by appointment

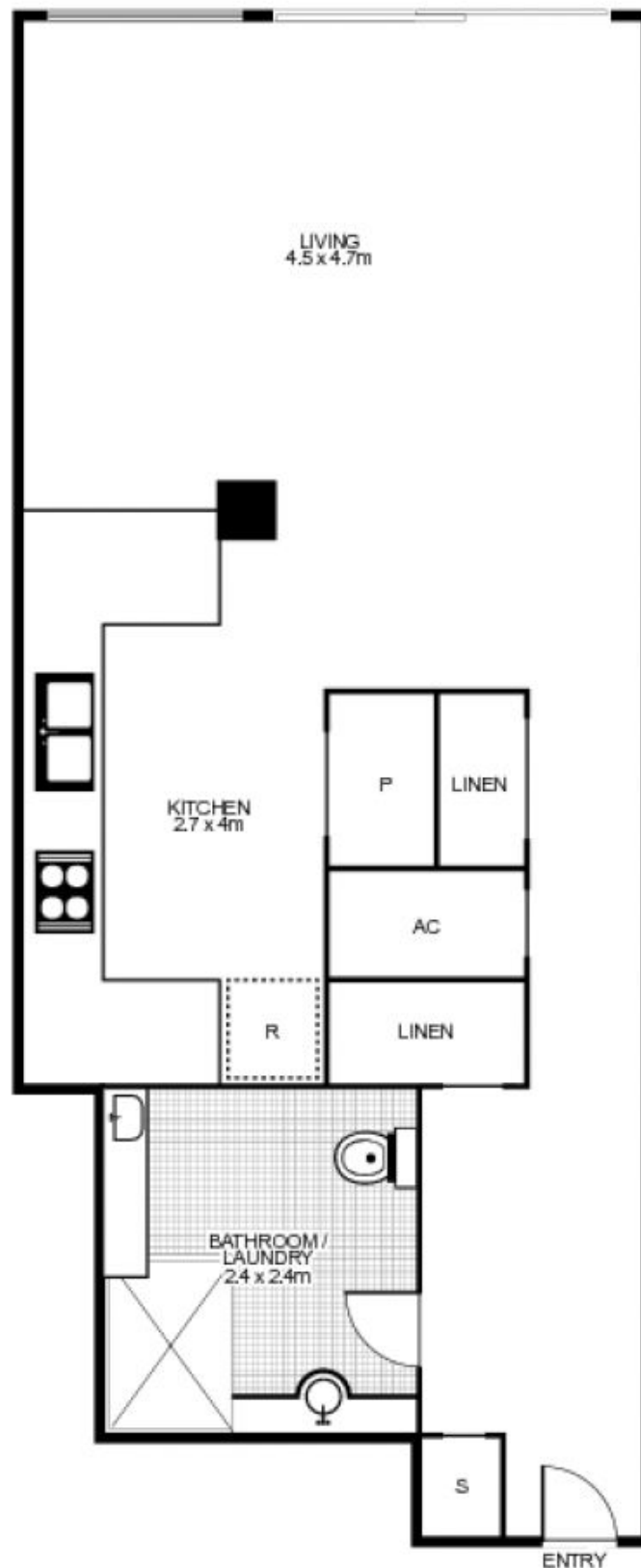
## Agent

**Noel Jenkins**

 0410 593 694

 noel@morton.com.au

**morton.com.au**



458/6 Cowper Wharf Road, WOOLLOOMOOLOO



This floor plan is intended as a guide only. Layout dimensions are approximate only. No representations or warranties of any nature whatsoever are given or intended. Any person using this information should rely on their own enquiries. Floor Plans by SURROUNDPIX.