



**morton.**

**Woolloomooloo** 512/6 Cowper Wharf Roadway

 3  3  2

This luxurious two level apartment occupying spacious designer interiors provides the ultimate lifestyle sanctuary in the heart of Sydney's East, within 5 minutes' walk of the CBD. Capturing sublime marina and city skyline views; it is placed within footsteps of iconic Sydney restaurants and shops.

- Contemporary open plan design features zoned living/dining
- Designer kitchen and guest powder room
- Large scale master-suite with walk through robe, chic ensuite with spa and separate shower
- Well scaled bedrooms all appointed with built in wardrobes
- Break out lounge area with day beds
- Loft with study nook, ducted air conditioning, video security intercom
- Motorised blinds, CBUS lighting
- Separate laundry

**morton.com.au**

**View**

As advertised or by appointment

**Agent**

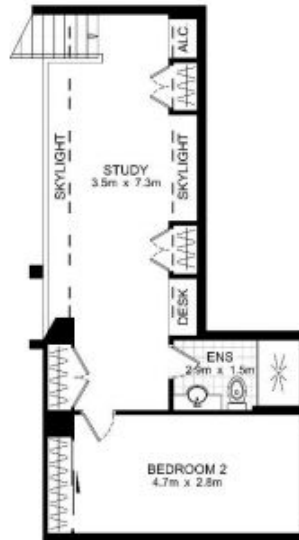
**Noel Jenkins**

 0410 593 694

 noel@morton.com.au



ENTRY FLOOR (LEVEL 4)



UPPER LEVEL



DOUBLE SECURE CARSPACE  
4.8m x 5m

BASEMENT



WHARF

512/6 Cowper Wharf Road, Woolloomooloo

DISCLAIMER: THIS PLAN IS FOR ILLUSTRATIVE PURPOSES ONLY. DIMENSIONS ARE APPROXIMATE AND IT DOES NOT CONSTITUTE PART OF ANY LEGAL DOCUMENTS.

