

morton.

Woolloomooloo 571/6 Cowper Wharf Road



Occupying a prized top floor position in the iconic Finger Wharf, this one bedroom loft apartment enjoys sweeping views across the bay to the CBD in the distance. A perfect city pad in Sydney's favourite landmark building that ticks all the boxes.

- Cathedral ceilings, remote control skylight blinds
- Loft bedroom, storage and en-suite
- Kitchen with ample cupboard space, gas cooking
- Entry level with guest cloakroom
- Separate internal laundry
- 24hr onsite security, with video intercom access
- Ducted air conditioning throughout
- Optional gym membership

View

As advertised or by appointment

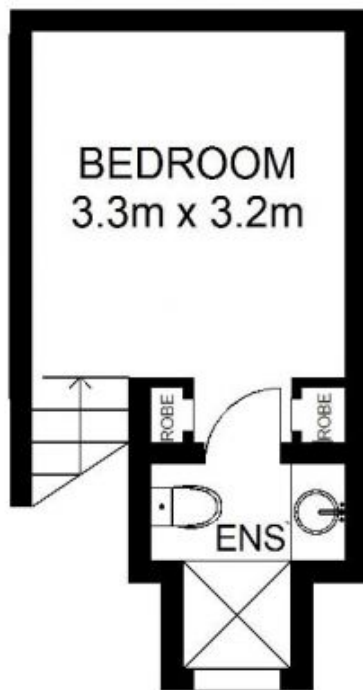
Agent

Noel Jenkins

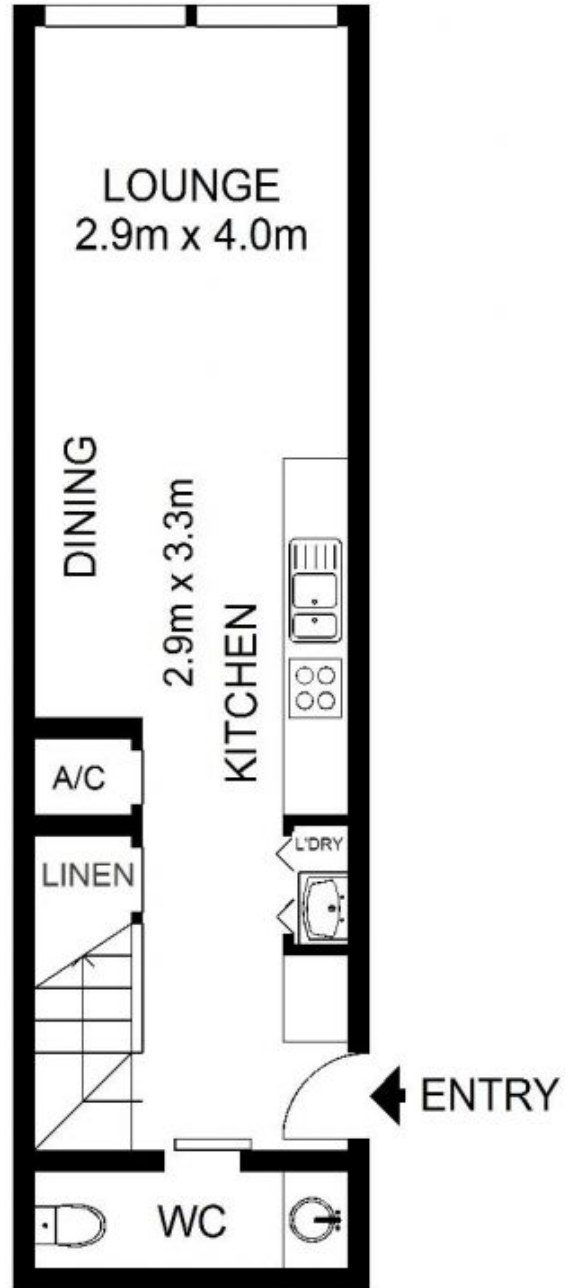
📞 0410 593 694

✉️ noel@morton.com.au

morton.com.au



UPPER LEVEL



ENTRY LEVEL

morton.

571/6 Cowper Wharf roadway, Woolloomooloo

Not to scale • All measurements are approximate • Drawn for marketing purposes only • Floorplan by © Industrie Media

