



# morton.

Woolloomooloo 511/6 Cowper Wharf Roadway

3 2 2

One of the largest lofts in the Finger Wharf, this magnificent apartment has a very generous floor plan that maximises open spaces and captures expansive views over the city skyline and marina.

There are two bedrooms, study and a media room/3rd bedroom in this apartment and all are generous in size. The master suite is located on the lower level and accommodates a walk-in wardrobe, ensuite with bath. On the upper loft level is media room that opens over the living area, the second bedroom and a second bathroom.

Conveniently placed just minutes to Potts Point with the vibrant Macleay street cafe & restaurant culture, the AGNSW and the city centre, this superb residence presents a lifestyle of unquestionable quality in a highly prized harbourfront setting. Ideally low maintenance, this property will appeal to all.

### View

As advertised or by appointment

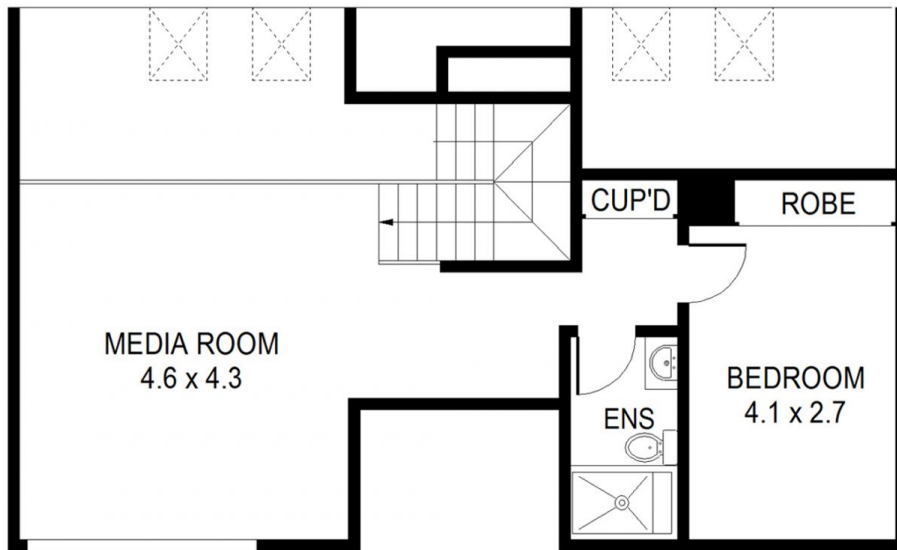
### Agent

**Noel Jenkins**

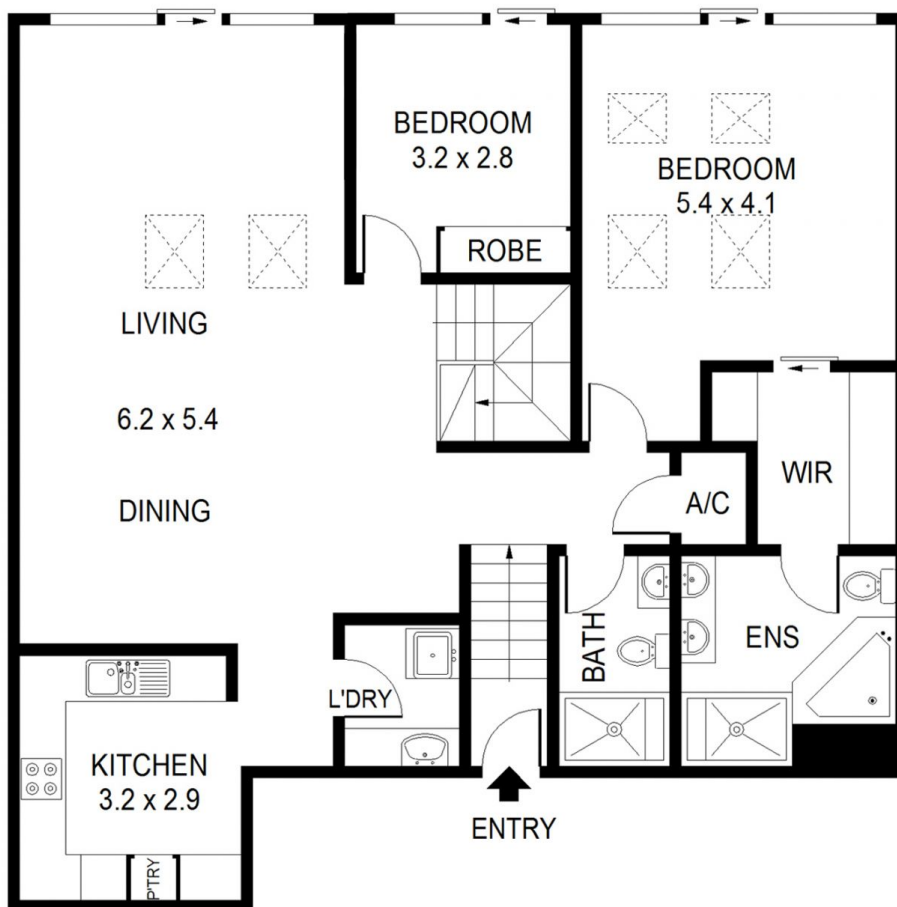
0410 593 694

noel@morton.com.au

[morton.com.au](http://morton.com.au)



**LOFT**



**LEVEL 5**



Scale shown in metres. All dimensions herein are approximate and gathered from sources believed to be reliable. Whilst every effort is made for the accuracy of our floor plans, interested parties should rely on their own enquiries. Floor Plans by Industrie Media | [industriemedia.tv](http://industriemedia.tv)