



**morton.**

**Pyrmont** 14/56A Pirrama Road

 3  4  2

Experience the ultimate in luxury harbourfront style and enjoy a superb combination of flowing interiors, high quality finishes and intimate water views. This impressive two-storey penthouse residence is the perfect sanctuary for those who demand lifestyle convenience and are seeking a stunning entertainers' retreat in an exclusive position on the Sydney Wharf pier.

- Expansive layout features nearly 300sqm of in/outdoor living space
- Inspiring views over Pyrmont Bay and around to the Harbour Bridge
- Flowing open plan living space features double height ceilings
- Wide dining terrace with harbour views plus second rear balcony
- Private rooftop entertainment space capturing city panoramas
- Three bedrooms include a master with walk-in and deluxe ensuite

**morton.com.au**

**View**

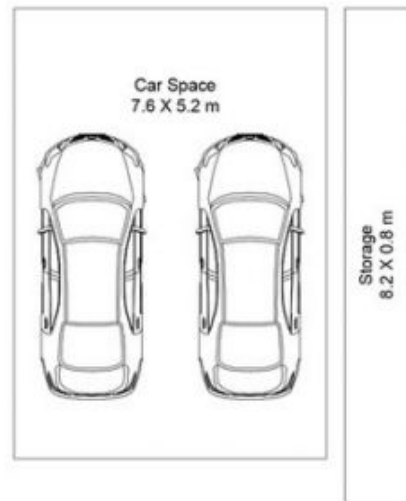
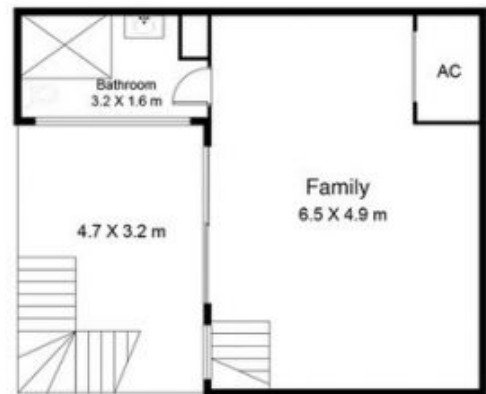
As advertised or by appointment

**Agent**

**James Crow**

 0410 593 057

 james@morton.com.au



This floor plan including furniture, fixture measurements and dimensions are approximate and for illustrative purposes only. Image Mountain gives no guarantee, warranty or representation as to the accuracy and layout. All enquiries must be directed to the agent, vendor or party representing this floor plan.

14/56a Pirrama Rd Pyrmont