



# morton.

**Pyrmont** 202/36 Refinery Drive

 3  2  2

Finished to the highest of standards and defining quality in both thought and design, this exceptional waterfront residence is the epitome of luxury harbourside living. Stylishly presented, invitingly spacious and exceedingly private, leafy views stretch across the harbour to the Balmain Peninsula.

- Generously proportioned with ample storage space
- Well proportioned open plan living, casual dining nook
- Double bedrooms, master boasts an ensuite and walk-in
- Deluxe granite kitchen and stainless steel gas appliances
- Sleek contemporary bathrooms, fans and video intercom
- Ducted air conditioning, sunny balcony, polished floors
- Two secure side by side parking spaces with storage shed

### View

As advertised or by appointment

### Agents

#### Ian Qiu

 0447 696 425

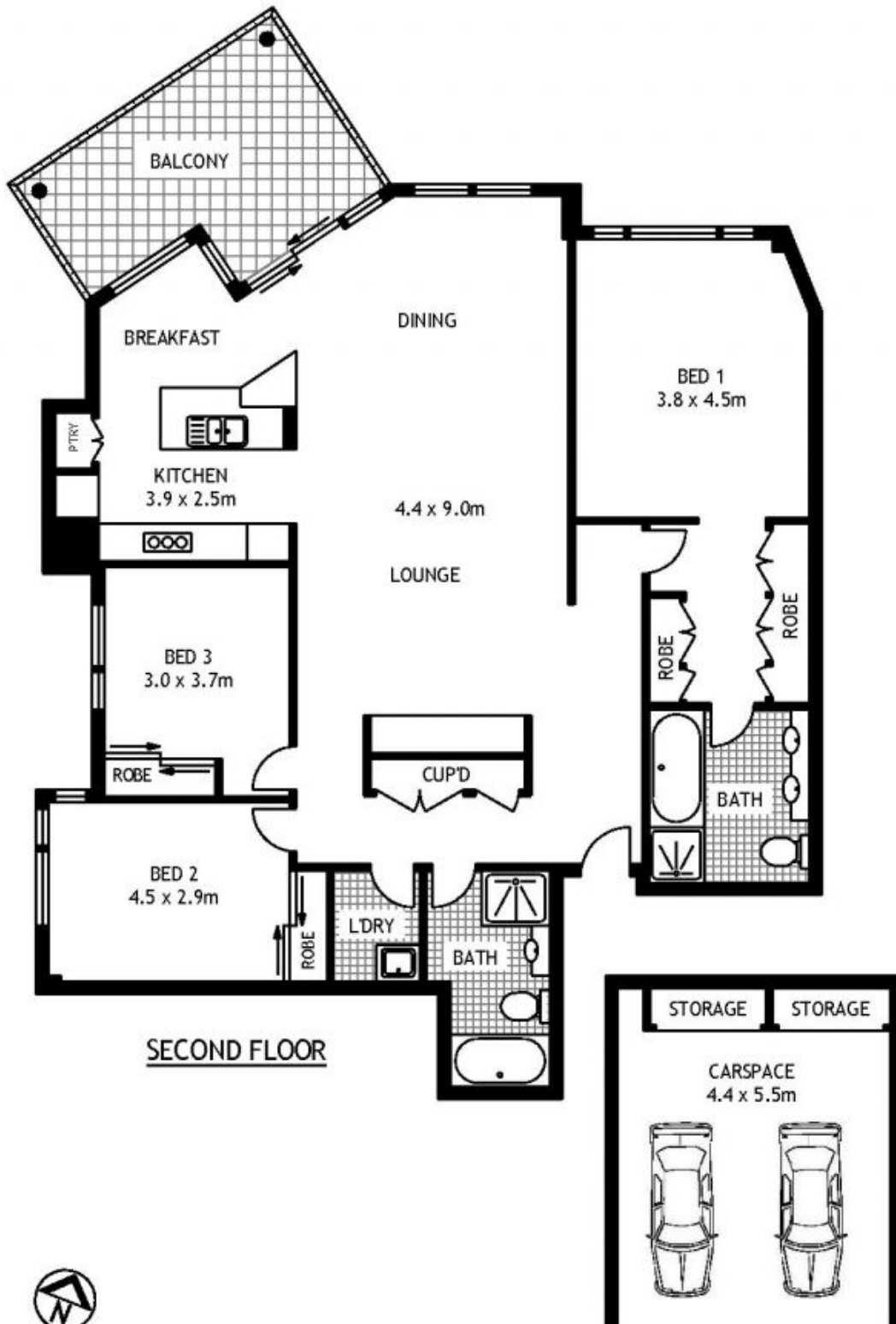
 [ian@morton.com.au](mailto:ian@morton.com.au)

#### Natasha Giannone

 0438 683 859

 [natasha@morton.com.au](mailto:natasha@morton.com.au)

[morton.com.au](http://morton.com.au)



202/36 REFINERY DRIVE

PYRMONT

SCAPE Floor Planning Disclaimer: This floor plan is conceptual only. It is provided for illustrative purposes only and should not be relied upon. We make no guarantees to the correctness of this plan. All interested parties should make and rely on their own enquiries in determining the accuracy of the information contained in this floor plan.