



# morton.

**Pyrmont** 25/2-10 Quarry Master Drive

 2  2  1

Peacefully nestled on a sought-after Jacaranda-lined street in the heart of one of Pyrmont's most desirable enclaves, this smart apartment offers low maintenance comfort and convenience throughout. Well appointed with nothing to add, this is the perfect abode for the investor, downsizer or couple alike.

- Open entertaining with dedicated lounge/dining
- Inviting granite kitchen boasts quality appliances
- Generous master complete with ensuite, built-ins
- Resort facilities include a pool, sauna and a gymnasium
- Leafy outlook, European laundry, video intercom
- BBQ balcony, air conditioning and polished floors
- Secure single lock up garage with storage

### View


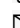
As advertised or by appointment

### Agents

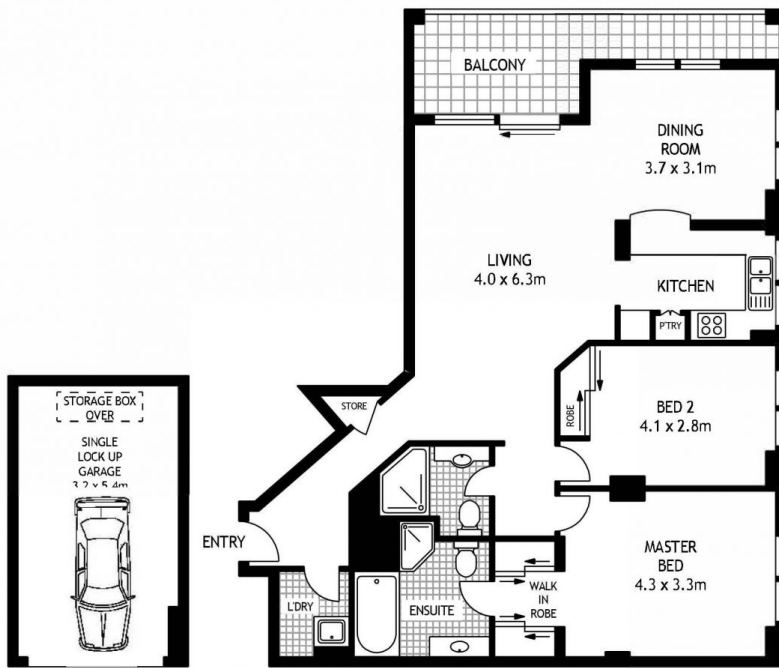
#### Ian Qiu

 0447 696 425  
 [ian@morton.com.au](mailto:ian@morton.com.au)

#### Natasha Giannone

 0438 683 859  
 [natasha@morton.com.au](mailto:natasha@morton.com.au)

[morton.com.au](http://morton.com.au)



BASEMENT

THIRD FLOOR



25/2-10 QUARRY MASTER DRIVE

PYRMONT

SCAPE Floor Planing Disclaimer: This floor plan is conceptual only. It is provided for illustrative purposes only and should not be relied upon. We make no guarantees to the correctness of this plan. All interested parties should make and rely on their own enquiries in determining the accuracy of the information contained in this floor plan.