



# morton.

**Pyrmont** 229/3 Darling Island Road

 3  2  2

Located on Darling Island's exclusive harbourside peninsula, this open plan three bedroom apartment will suit those seeking space, privacy and exceptional finishes. Positioned on the water's edge and spanning across the entire floor, this apartment enjoys harbour views and takes in Pyrmont's historic finger wharves.

- Large open plan lounge and dining with soaring ceilings
- Opens to large balcony ideally suited to indoor/outdoor living
- Additional balcony off bedrooms with bridge/city views
- Sleek designer kitchen , Miele appliances
- Spacious king sized bedrooms with fitted built-in wardrobes
- Superbly crafted marble bathrooms, master with ensuite
- Dual-zone air conditioning, automated exterior sun screens
- Direct lift access with entry lobby shared with sole neighbour only
- Building security, secure two car tandem parking, storage cage
- Concierge service, 20 metre pool, gym, spa and sauna

### View

As advertised or by appointment

### Agent

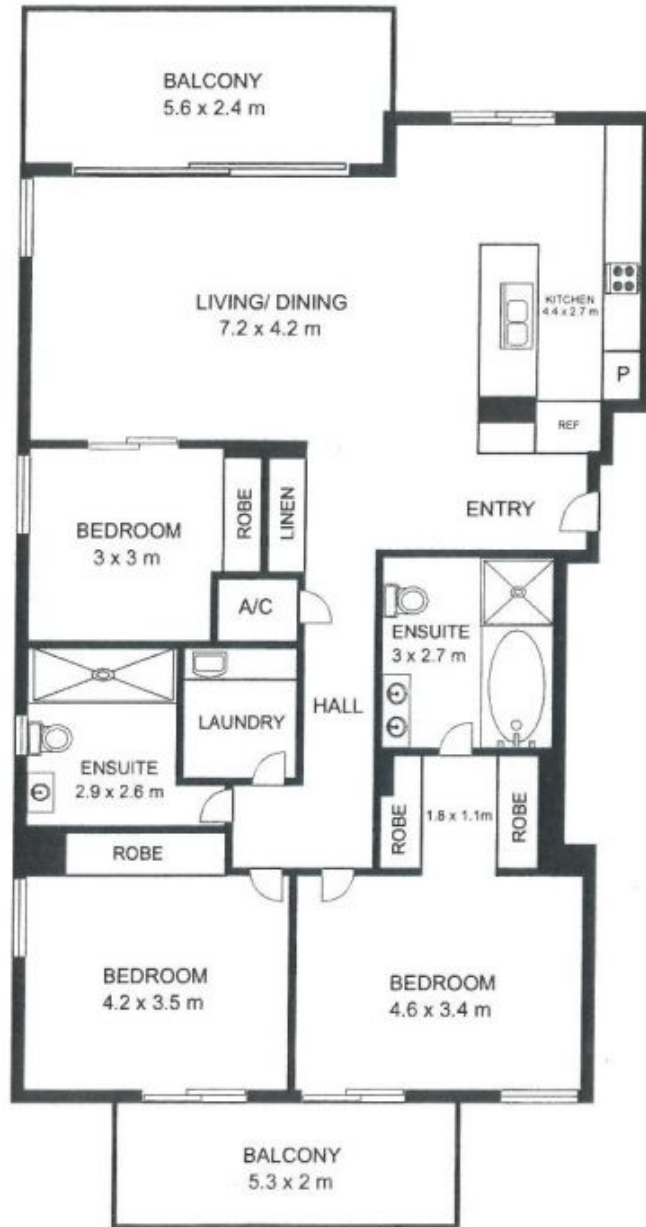
**James Crow**

 0410 593 057

 james@morton.com.au

[morton.com.au](http://morton.com.au)

**3 Darling Island Road,  
PYRMONT**



STORAGE  
9m<sup>2</sup>



Plans by  
**surroundpix**  
1300 30 32 40

This floor plan is intended as a guide only. layout dimension are approximate only. No representation or warranties of any nature whatsoever are given or intended. Any person using this information should rely on their own enquiries.