



morton.

Pymble W13.02/1 Avon Road

 3  2  2

View

As advertised or by appointment

Agent

Nevena Petrovic

 0428 835 910

 rentals@morton.com.au

Located on the top floor of the near new 'Avon' development, this expansive and stylish property bathes in natural light and elegance. Located in the centre of Sydney's leafy North Shore, in the heart of prestigious Pymble this stunning home provides a tranquil lifestyle with Pymble train station, local schools, parklands and recreation facilities at your doorstep.

With Pymble Ladies' College (PLC) across the road, some of Sydney's most prestigious schools such as Ravenswood, Abbotsleigh, Knox, and Barker College are only a short train ride away.

- Open plan living with an abundance of natural light filtering through from large windows and skylight.
- Floorboards throughout with wool-blend carpets in all bedrooms
- Brand new kitchen with Miele appliances, induction stove top and soft close cupboards. Appliances include oven, dishwasher, and microwave
- King-sized master bedroom with walk-in-robe and over sized

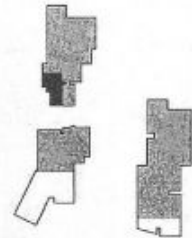
morton.com.au

WARATAH

Unit W10.02, W11.02,
W12.02, W13.02

3 Bedroom
2 Bathroom

INTERNAL AREA 104m²
EXTERNAL AREA 9m²
TOTAL AREA 113m²



1AVON
PYMBLE



DISCLAIMER: The particulars are set out as a general outline for the guidance of intending purchasers and do not constitute an offer or contract. All dimensions, elevations, references to conditions and necessary permissions for use and other details are given in good faith and are believed to be correct, but any intending purchaser should not rely on them as statements or representations of fact. They must satisfy themselves by inspection or otherwise as to the correctness of each item, and where necessary seek advice from a professional surveyor or their agent. All rights are reserved by the developer or its agents. All dimensions are subject to final survey. Completed dimensions may vary from the plans shown.



1800 425 949
1AVON.COM.AU

CBRE AUSBAAO