



morton.

Gladesville 205/161 Victoria Road

 1  1  1

Located in the Northview building and located nearby to Gladesville's shopping and restaurant district is this spacious apartment offering a convenient lifestyle opportunity for someone looking for a quality home.

- Open plan living and dining flowing onto balcony
- Bamboo timber flooring in living, carpet in bedroom
- Sleek galley style kitchen, Smeg appliances
- Generous bedroom with built-in robes
- Entertainers size balcony with gas for BBQ
- Ducted air conditioning, internal laundry with dryer
- Undercover security car space, lift access

View

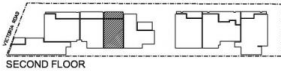
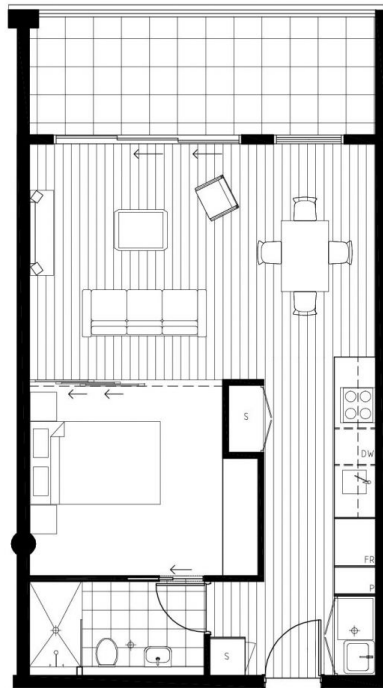
As advertised or by appointment

Agent

Morton RE

  rentals@morton.com.au

morton.com.au



Disclaimer: Please note that the particulars are set out as a general outline for the guidance of intending purchasers and do not constitute an offer or contract. This floor plan was produced prior to construction and the information is believed to be correct but is not guaranteed. In accordance to the provisions of the contract for sale, changes may be made during construction and dimensions, areas, fittings and specifications are subject to change without notice. Furniture and fittings depicted are not included with any sale and purchasers must refer to the contract of sale for the list of inclusions. The position of furniture and fittings should not be taken to be indicative of final positions of power points, TV connection points and the like. Purchasers must rely on their own enquiries. All graphics including the layout, balustrades and the like are indicative only. Bulkheads for services are not depicted. Floor plan is at an unspecified scale and all area sizes indicated are approximate only and are subject to final survey.

NORTHVIEW
APARTMENTS

161 VICTORIA RD, GLADESVILLE

APARTMENT 205
STUDIO

LEVEL 2

AREAS

INTERNAL	52m ²
EXTERNAL	11m ²
TOTAL	63m²

CPM
REALTY

CALL (02) 9247 1299

northviewapartments.com.au

A QUALITY
EKOS DEVELOPMENT

