



morton.

Sydney 17/16 O'Connell Street

 3  2

Occupying a premier central setting in a renowned Art Deco building, this remarkable tri-level penthouse presents a truly rare opportunity. Beautifully appointed, this quality offering is the perfect executive retreat or unique city office space.

- Well proportioned and flowing over an impressive 244sqm
- Three bedrooms plus study
- Expansive living areas with a massive entertaining terrace
- Generous secluded master with ensuite, walk-in, balcony
- Modern marble kitchen boasts Smeg electric appliances
- Reverse cycle air conditioning, security lift access
- No parking included

View

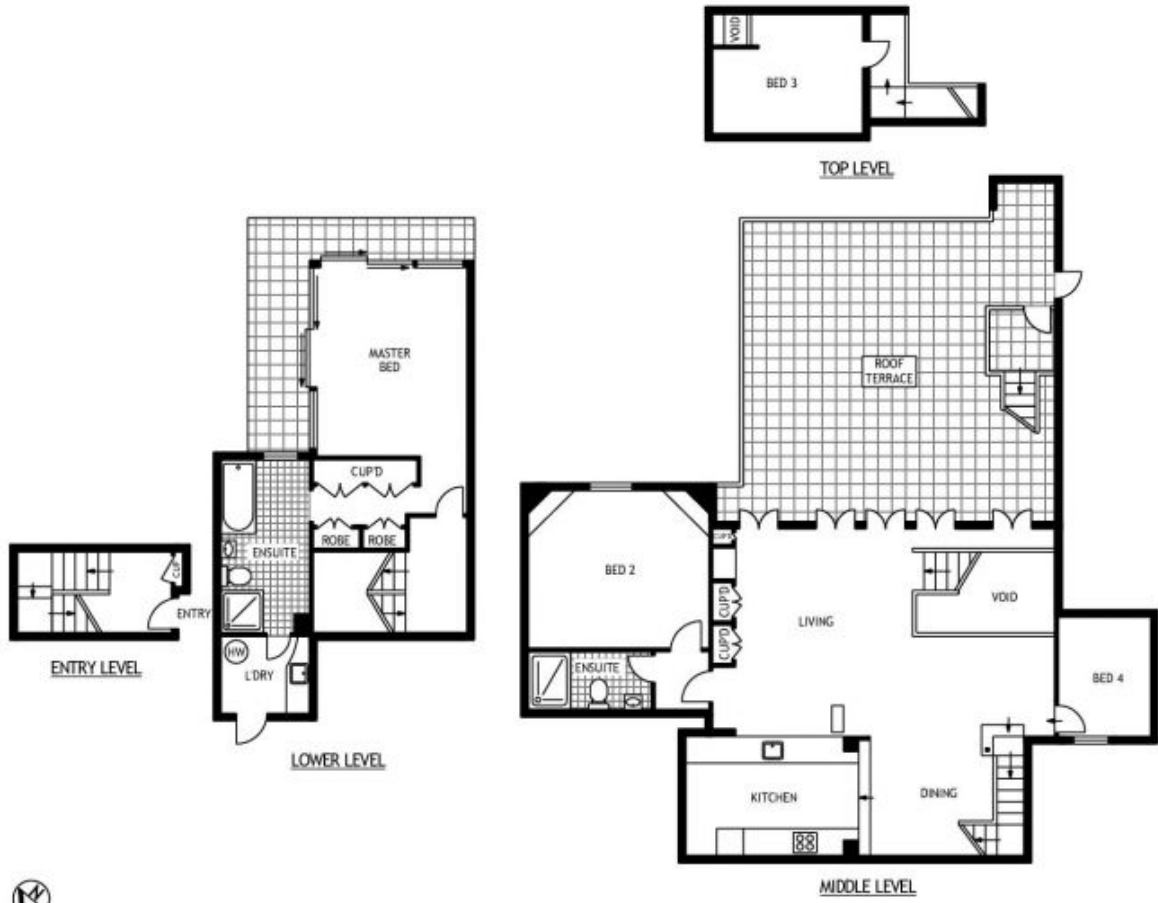
As advertised or by appointment

Agent

Morton RE

 rentals@morton.com.au

morton.com.au



17/16 O'CONNELL STREET

SYDNEY

SC414 Floor Plans/Declaration: This floor plan is conceptual only. It is provided for illustrative purposes only and should not be relied upon. We make no guarantee as to the correctness of this plan. All interested parties should make and rely on their own enquiries to determine the accuracy of the information contained in this floor plan.