



morton.

Little Bay 2/10 Darwin Avenue

 1  1  1

Located just 20 minutes from Sydney CBD and just five minutes walk from Little Bay Beach, 'East Village' comprises a unique collection of superbly restored landmark heritage buildings. This beautiful single story apartment features elegant stylish space, soaring four metre high ceilings and modern features.

- Stylish designer kitchen and bathroom
- High ceilings and grand windows maximise light and airflow
- Designer lights, built in robes & internal laundry
- Quality woolen carpets & stylish tiles throughout
- Car space and huge basement storage
- Large outdoor terrace which extends from lounge room
- Stainless steel appliances and stone benchtops

View

As advertised or by appointment

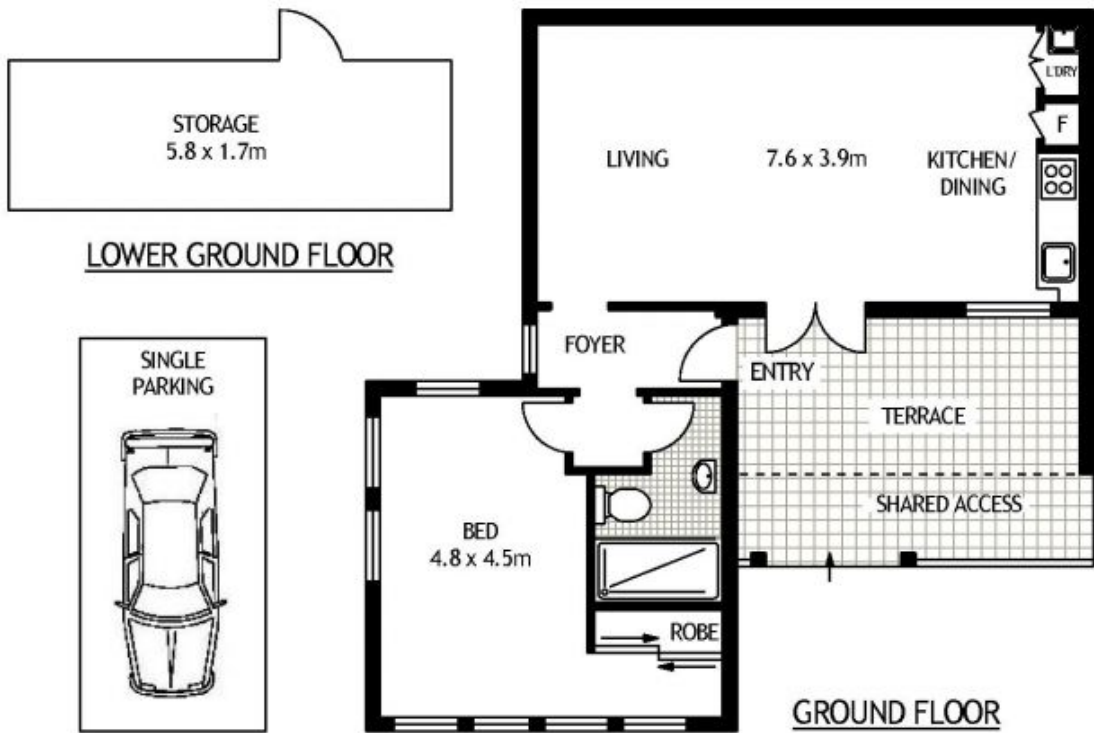
Agent

Sarah Fowell

 0437 492 129

 sarah@morton.com.au

morton.com.au



2/10 DARWIN AVENUE

LITTLE BAY

SCAPE Floor Planing Disclaimer: This floor plan is conceptual only. It is provided for illustrative purposes only and should not be relied upon. We make no guarantees to the correctness of this plan. All interested parties should make and rely on their own enquiries in determining the accuracy of the information contained in this floor plan.