



# morton.

**Penrith** 908/10 Aviators Way

 2  2  1

Thornton Central apartments are located on the north side of Penrith train station with uninterrupted park and district views, some with water views towards the picturesque Blue Mountains, situated in the master-planned community Thornton Estate, offering convenient apartment living only metres to Penrith train station, Westfield shopping centre, local parks and quality restaurants and cafes.

#### Features

- Level 9, large covered balcony with district views
- Open living and dining with engineered timber flooring, study area
- Carpeted bedrooms with mirrored built-in robes and quality bathrooms
- Mirrored splashback kitchen, stone bench tops, soft close cupboards
- Four burner gas cooktop with stainless steel appliances,
- LED lighting, reverse-cycle air conditioning in the living and bedrooms
- NBN ready, MATV and payTV points in the living room and


[morton.com.au](http://morton.com.au)

#### View

As advertised or by appointment

#### Agent

**David Lipman**

 0409 663 535

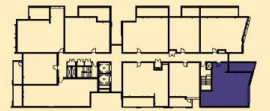
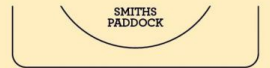
 david@morton.com.au



# B908

## BUILDING B

12 2 1



INTERNAL: 82M<sup>2</sup>  
 EXTERNAL: 11M<sup>2</sup>  
 TOTAL: 93M<sup>2</sup>



DATE ISSUED: 04.11.2015  
 VERSION: 01

Developed by **StHilliers** **FIRST POINT PROJECTS** | Sales by **LINK** **Home LandDirect** **THORNTONCENTRAL.COM.AU**

**Disclaimer:** This floor plan has been prepared for marketing purposes only. All descriptions, dimensions, depictions and other details in this floor plan (together, the "Information") may not be to scale. The vendor reserves the right to vary or amend the Information without notice. The Information may vary from the actual dimensions, layout and characteristics of the property as built. No third party has any authority whatsoever, either expressly or impliedly, to make or give any representation or warranty or to bind the vendor in connection with the information or the property.

**Sheffield**  
 THORNTON