



# morton.

**Pyrmont** 238/3 Darling Island Road

 2  2  1

Privately set in what is unquestionably one of Sydney's most sought-after harbourside developments, this impeccable executive residence defines ultra contemporary designer living. Capturing breathtaking water views, this stunning home is exceedingly well proportioned for an effortless entertaining lifestyle.

- Palatial open plan lounge flows to a huge sun deck
- Immaculately appointed for low maintenance living
- Facilities include a pool, gym, spa, sauna, concierge
- Generous double bedrooms boast ensuites, balcony
- Spacious CaesarStone kitchen has Miele gas fixtures
- Ducted air conditioning, only two apartments per floor
- Ample storage, secure parking space, internal laundry

### View

As advertised or by appointment

### Agent

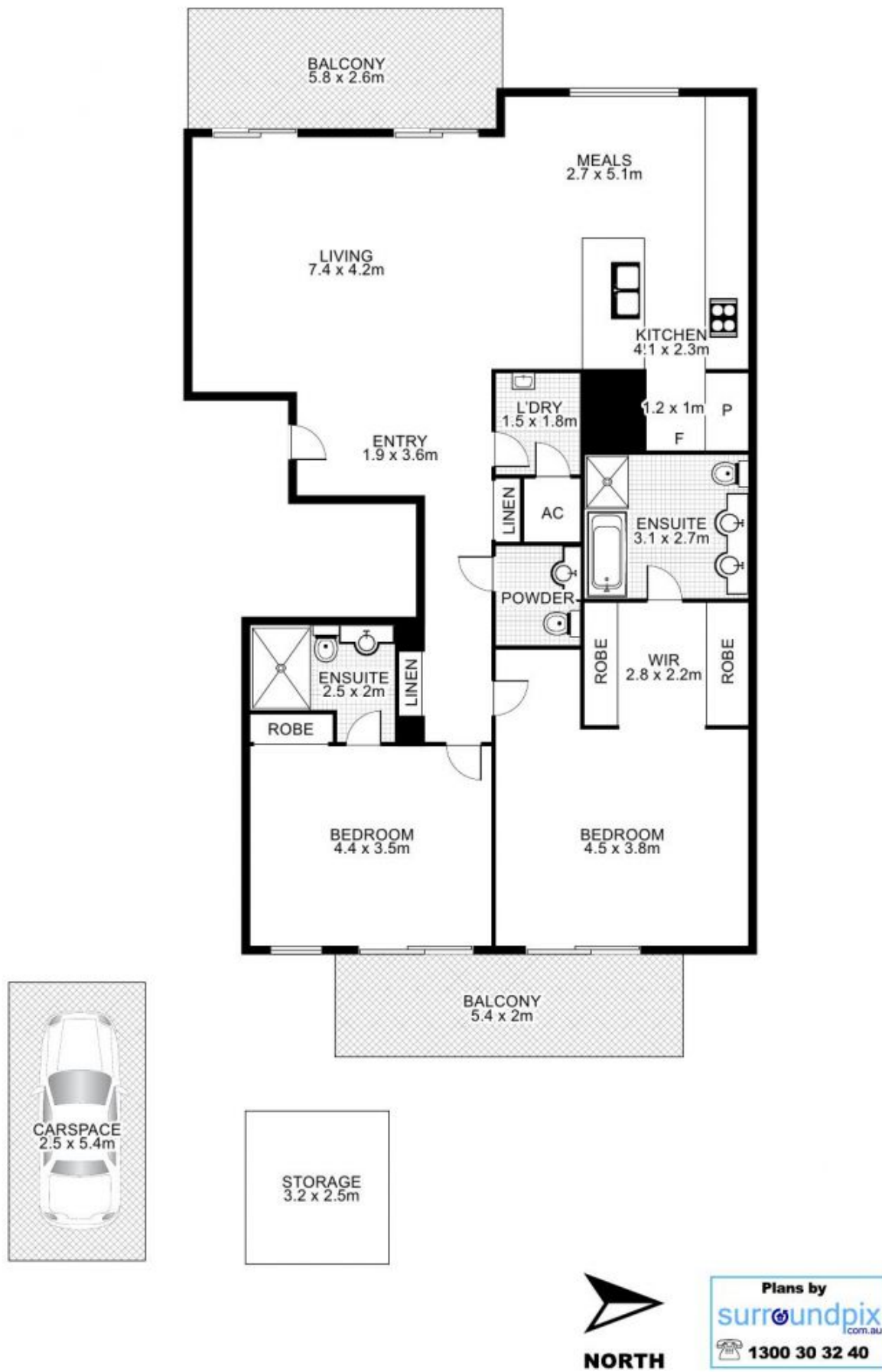
**James Crow**

 0410 593 057

 james@morton.com.au

[morton.com.au](http://morton.com.au)

# 238/3 Darling Island Road, PYRMONT 2009



This floor plan is intended as a guide only. Layout dimension are approximate only. No representation or warranties of any nature whatsoever are given or intended. Any person using this information should rely on their own enquiries.