



# morton.

**Penrith** 206/81A Lord Sheffield Circuit


 3  2  2

### View

As advertised or by appointment

### Agent

**David Lipman**

 0409 663 535

 david@morton.com.au

### Features

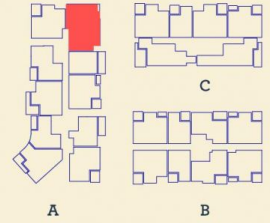
- Northwest facing with a massive wrap-up covered balcony;
- ;
- Two car spaces in the secured basement;

[morton.com.au](http://morton.com.au)



*Apartment*

3BED- A 206



Internal	103 m <sup>2</sup>
External	20 m <sup>2</sup>
<b>Total</b>	<b>123 m<sup>2</sup></b>

DATE ISSUED 27/07/2015  
VERSION 02

Developed by **St Hilliers** **FIRST POINT PROJECTS** | Sales by **LINK** **Home LandDirect** [thorntoncentral.com.au](http://thorntoncentral.com.au)

**Disclaimer:** This floor plan has been prepared for marketing purposes only. All descriptions, dimensions, depictions and other details in this floor plan (together, the "Information") may not be to scale. The vendor reserves the right to vary or amend the Information without notice. The Information may vary from the actual dimensions, layout and characteristics of the property as built. No third party has any authority whatsoever, either expressly or impliedly, to make or give any representation or warranty or to bind the vendor in connection with the information or the property.

**THORNTON**