



morton.

Annandale 13/233A Johnston Street

 1  1  1

This brand new Portobello apartment elegantly unites classic charm with contemporary luxury. Created to merge seamlessly with the rich, textural walls of the old warehouse, this property combines sophisticated urban living with superb finishes and functional design.

- ? Open plan living flowing onto east facing balcony
- ? Generously proportioned balcony that embraces spectacular urban views.
- ? Caesarstone kitchen benchtops, integrated dishwasher & gas cook top with Miele appliances
- ? High ceilings featured in a sleek and spacious floorplan
- ? Walk-in laundry
- ? Oak timber flooring throughout
- ? Spacious double sized bedroom with built in wardrobe
- ? Large study/ home office can be used as a nursery or second bedroom.

A uniquely cosmopolitan urban village, Annandale is a thriving hub of culture and creativity, conveniently located less than 10

View

As advertised or by appointment

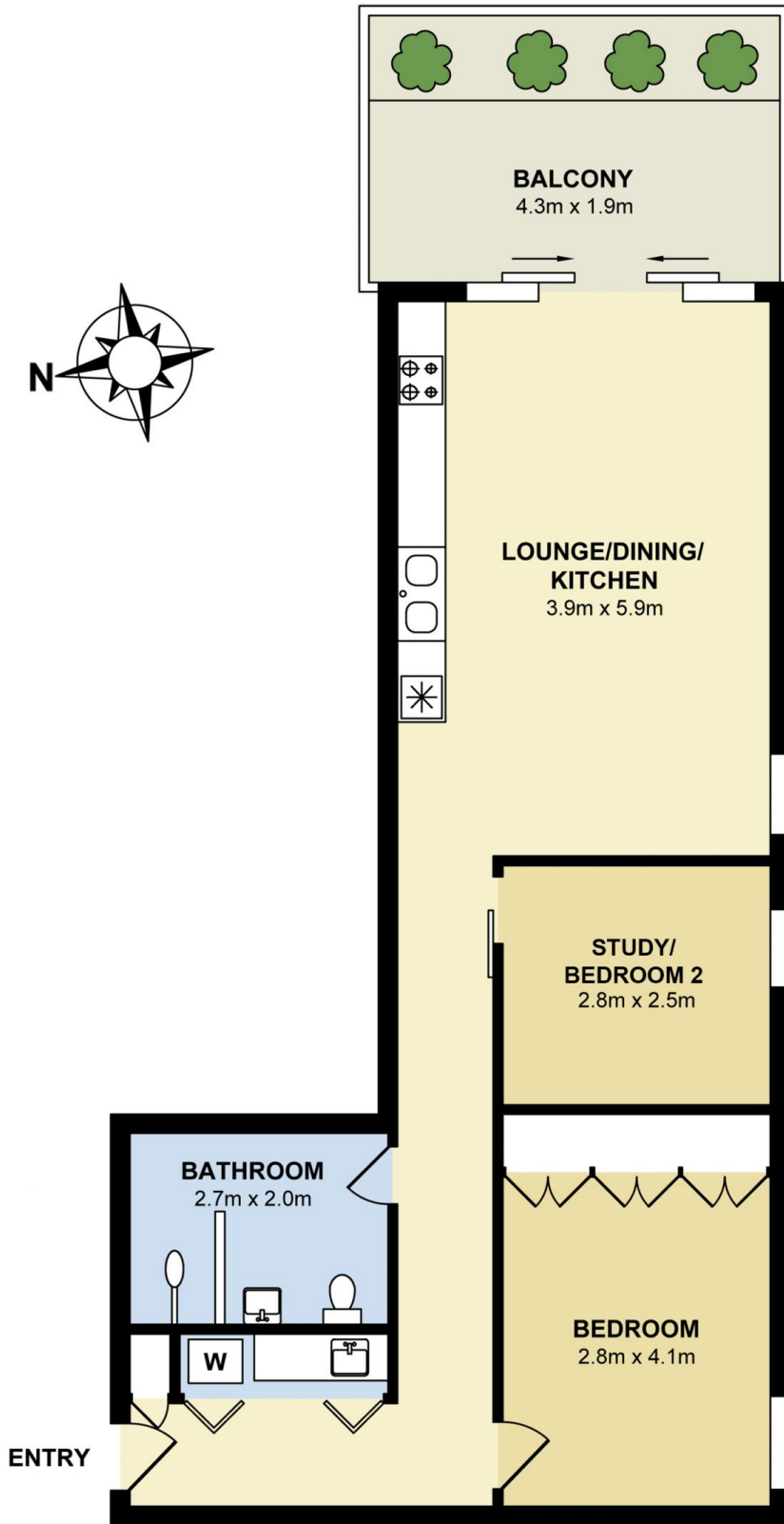
Agent

Morton



 info@morton.com.au

morton.com.au



13/233A Johnston Street, Annandale

Measurements are approximate. Not to scale. Illustrative purposes only
Open2view does not take any responsibility for any information supplied