

morton.

Wentworth Point 616/21 Hill Road

 1  1  1

The Waterfront is located moments to Sydney Olympic Park main venues, train station, Bicentennial Park and Millennium Parklands. Located in Paros, this is your opportunity to move into this fully furnished one bedroom apartment only a short stroll from The Promenade and The Piazza.

- Combined living and dining room
- Reverse cycle air conditioning
- Open kitchen with stainless steel appliances
- Gas cooking and lots of cupboard space
- Great size bedroom with huge built-in wardrobes
- Laundry room and clothes dryer
- Secure undercover car space and storage cage
- \$490pw FULLY FURNISHED
- \$470pw UNFURNISHED

View

As advertised or by appointment

Agent

Morton RE

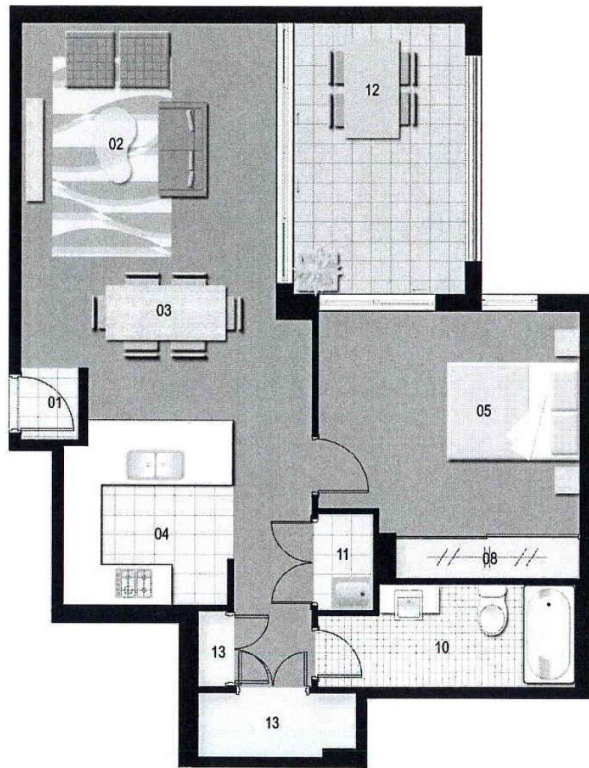


 rentals@morton.com.au

morton.com.au

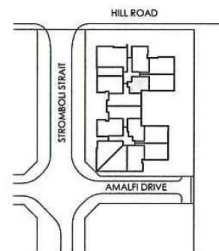
PAROS

THE WATERFRONT
AT HOMEBUSH BAY



ENTRY
LIVING
DINING
KITCHEN
BEDROOM 1
BEDROOM 2
BEDROOM 3

WARDROBE
ENSUITE
BATHROOM
LAUNDRY
BALCONY
STORAGE



Unit 616

Lot Number	17
Type	1 Bedroom
Unit Area	64 sqm
Balcony	11 sqm
Total	75 sqm

Disclaimer: All layouts are indicative only, and subject to change.

05.05.06 : Revision D

Robertson+Marks
ARCHITECTS

PAYCE