



**morton.**

**Wentworth Point** 409/7 Stromboli Strait

 2  2  1

The Waterfront is located moments to Sydney Olympic Park main venues, train station, Bicentennial Park and Millennium Parklands. Located in St Tropez, this is your opportunity to move into this two bedroom apartment only a short stroll from The Promenade and The Piazza.

- Luxury waterfront apartment located on level two
- Combined living and dining rooms
- Ducted air conditioning
- Full size kitchen with designer modern stainless steel appliances
- Gas cooking and quality finishes throughout
- Generous size separate living areas
- Good size bedrooms with built-in wardrobes
- Laundry room and clothes dryer
- Single car space and storage cage.

**View**

As advertised or by appointment

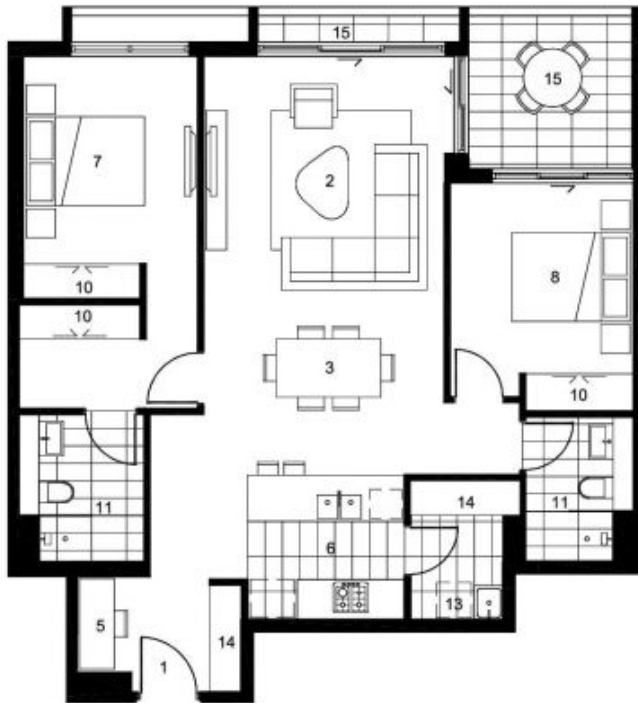
**Agent**

**Morton RE**



 rentals@morton.com.au

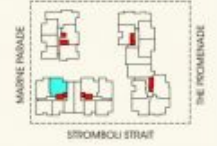
**morton.com.au**



## ST TROPEZ THE WATERFRONT

### APARTMENT 2409 LEVEL 4 2 BED / 2 BATH

Internal Area 94 sqm  
External Area 9 sqm  
Total Area 103 sqm



#### KEY

- 01 Entry
- 02 Living
- 03 Dining
- 04 Study
- 05 Kitchen
- 06 Bedroom 1
- 07 Bedroom 2
- 08 Bedroom 3
- 09 Bedroom 4
- 10 Wardrobe
- 11 Bathroom
- 12 Powder Room
- 13 Laundry
- 14 Store
- 15 Balcony / Courtyard

Disclaimer: The particulars are set out as a general outline for the guidance of intending purchasers and do not constitute an offer or contract. All descriptions, dimensions, references to conditions and restrictive covenants are given in good faith and are believed to be correct, but any intending purchasers should not rely on them as statements or representations of fact, but must verify, themselves by inspection or otherwise to the satisfaction of their solicitor, and obtain necessary legal advice. The third party supplier or their agents has no authority to make or give any representation or warranty in relation to this property. \*Minimum prices include charge for councilward apartments. Refer to the detailed price schedule.

