



# morton.

**Penrith** 506/101C Lord Sheffield Circuit

 1  1  1

Located next to Penrith train station and across the rail line to Westfield, this 62sqm one bedroom unfurnished apartment in the as-new Thornton development (completed December 2016), offers convenient living in a master planned community only metres from all the amenities and transport you'd expect.

- Carpeted open plan living/dining (dark colour scheme) with reverse cycle air conditioning
- Large north facing balcony positioned on level 5
- Entertainers kitchen with gas cooktop, CaesarStone bench tops, soft close kitchen draws and cupboards and stainless steel omega appliances
- Filled with natural light from the floor to ceiling windows
- Large internal laundry with omega dryer
- NBN ready, efficient LED ceiling downlights and data/TV points in living and bedroom
- Mirrored cabinets in the bathroom with shower head rose
- Security building with basement parking, storage cage and intercom access
- Pets on application

[morton.com.au](http://morton.com.au)

### View

As advertised or by appointment

### Agent

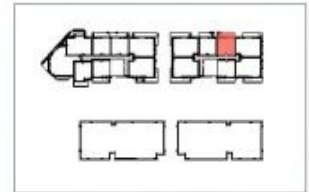
**David Lipman**

 0409 663 535

 david@morton.com.au



# Apartment C506 1 Bed



Internal	54 m <sup>2</sup>	N
External	14 m <sup>2</sup>	
Total	68 m <sup>2</sup>	

0 2.5 5m

**THORNTON**  
ThorntonCentral.com.au

Disclaimer: This floor plan has been prepared for marketing purposes only. All descriptions, dimensions, depictions and other details in this floor plan (together the "Information") may not be to scale. The vendor reserves the right to vary or amend the Information without notice. The Information may vary from the actual dimensions, layout and characteristics of the property as built. No third party has any authority whatsoever, either as agent or in any way, to make or give any representation or warranty or to bind the vendor in connection with the information of the property.  
Dedicated to: 23/02/2014. Version: 01