



morton.

Pyrmont 258/3 Darling Island Road

 2  3  1

Located on Darling Island's exclusive harbourside peninsula, this open plan top floor apartment will suit those seeking space, privacy and exceptional finishes. Positioned on the water's edge and spanning across the entire floor, this apartment enjoys Harbour Bridge and Barangaroo views and takes in Pyrmont's historic finger wharves.

- Large open plan lounge and dining with soaring pitched ceilings
- Opens to large balcony ideally suited to indoor/outdoor living
- Additional balcony off bedrooms with bridge/city views
- Exclusive rooftop with 180 degree views and Louvre screens

- Flooded with natural light, large amount of internal storage
- Designer kitchen, Miele appliances and dual skylights
- Spacious king sized bedrooms with built-in wardrobes
- Superbly crafted marble bathrooms, both bedrooms with ensuites
- Air conditioning, ceiling fans and remote sunscreens
- Direct lift access with entry lobby shared with sole neighbour

View

As advertised or by appointment

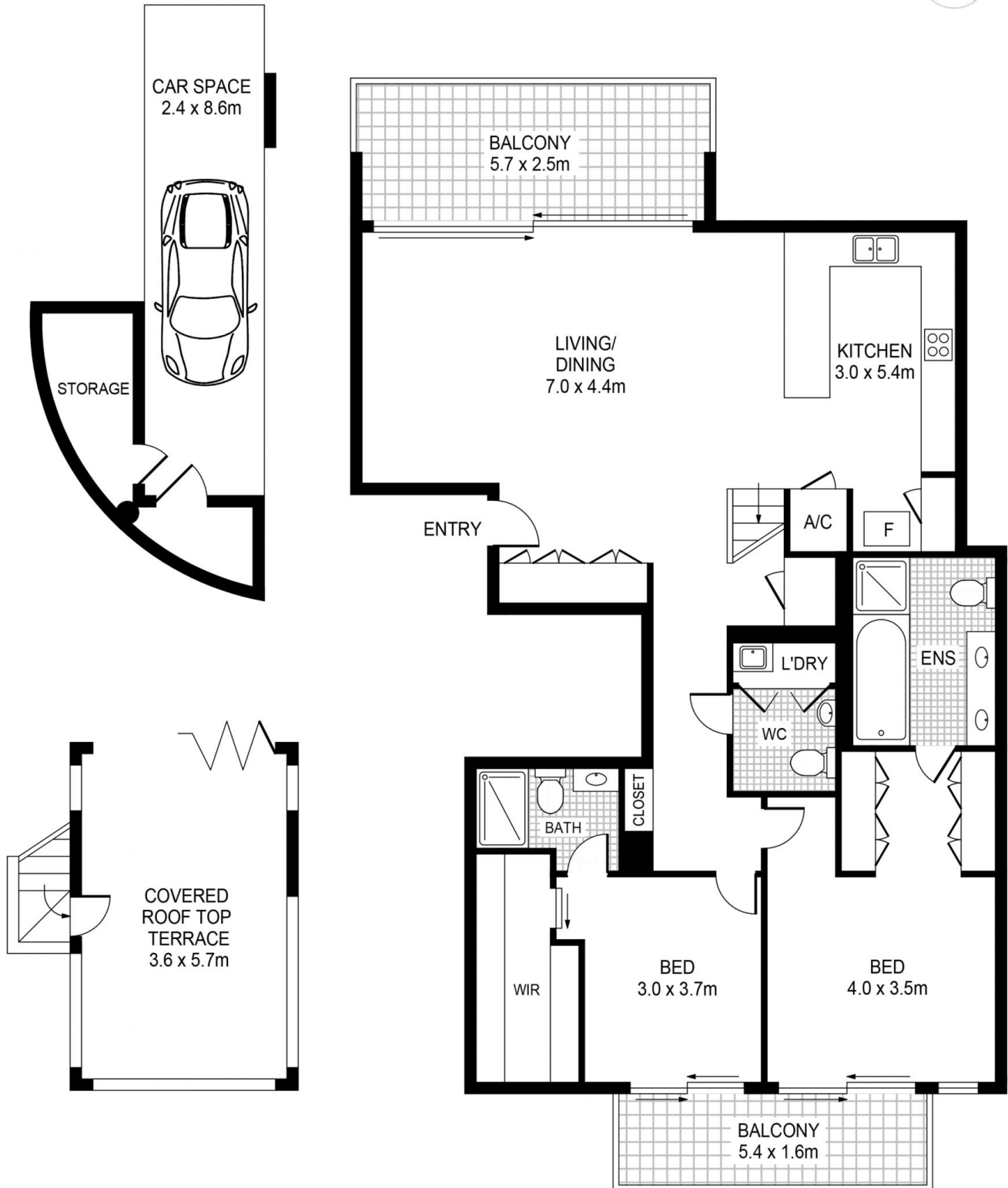
Agent

James Crow

 0410 593 057

 james@morton.com.au

morton.com.au



258/3 Darling Island Rd PYRMONT



This floor plan including furniture, fixture measurements and dimensions are approximate and for illustrative purposes only. Image Mountain gives no guarantee, warranty or representation as to the accuracy and layout. All enquiries must be directed to the agent, vendor or party representing this floor plan.