



morton.

Pyrmont 217/11 Pirrama Road

 3  2  2

Occupying a prized position in 'The Promontory', one of Pyrmont's most exclusive harbourside offerings, this exceptional residence has undergone a contemporary transformation. Flooded with the streaming light of a northern aspect, views stretch across the harbour waters to the majestic arch of the Bridge.

- Impeccably finished with a superior attention to detail
- Intuitively crafted for seamless indoor/outdoor living
- Expansive open lounge, large covered balcony
- Formal and informal dining areas with a harbour backdrop
- Generous double bedrooms, master with marble ensuite
- Bespoke kitchen, Integrated fridge/freezer, Miele appliances
- Polished timber floors, air conditioning, full laundry
- Indoor pool, gym, sauna, spa, excellent internal storage
- Lock up garage for 2 cars, storage cage and visitor parking

View

As advertised or by appointment

Agent

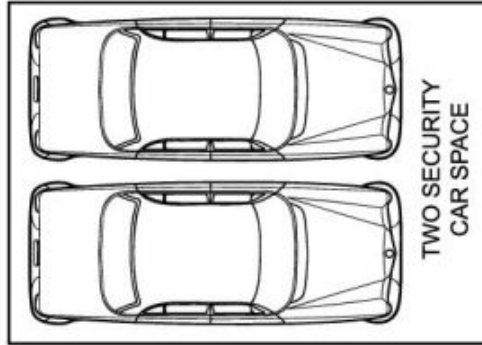
James Crow

 0410 593 057

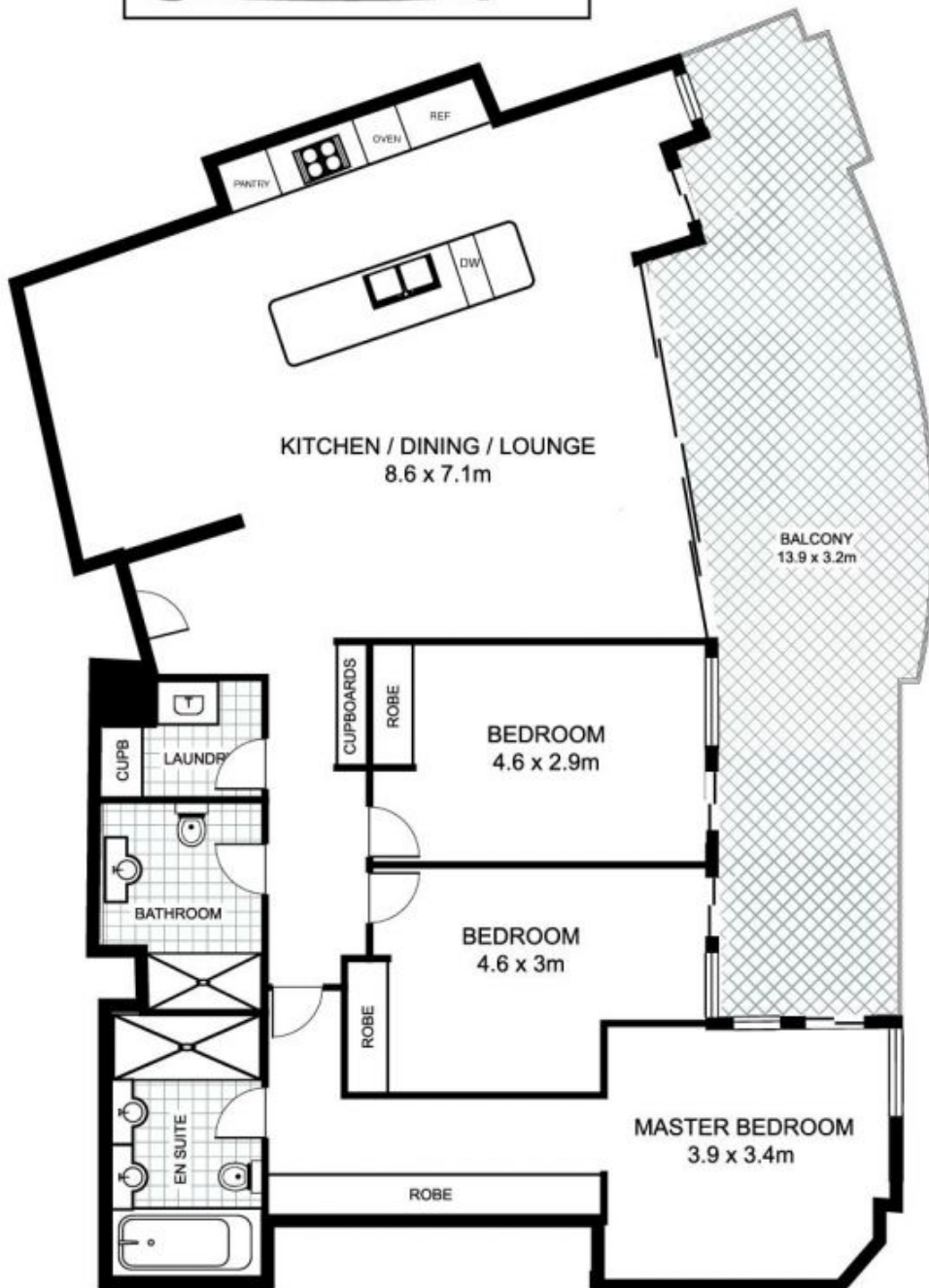
 james@morton.com.au

morton.com.au

217/11 Pirrama Road, PYRMONT



LOCK UP
STORAGE
CAGE
3sqm



Plans by
surroundpix
com.au
1300 30 32 40

This floor plan is intended as a guide only. Layout dimensions are approximate only. No representations or warranties of any nature whatsoever are given or intended. Any person using this information should rely on their own enquiries