



morton.

Wentworth Point 407/18 Corniche Drive

 2  2  2

The Waterfront is located moments to Sydney Olympic Park main venues, train station, Bicentennial Park and Millennium Parklands. Located in Catania, this is your opportunity to move into this two bedroom apartment only a short stroll from The Promenade and The Piazza.

- Luxury waterfront apartment located on level four
- Combined living and dining rooms
- Air conditioning
- Full size kitchen with designer modern stainless steel appliances
- Gas cooking and quality finishes throughout
- Generous size separate living areas
- Good size bedrooms with built-in wardrobes
- Laundry room and clothes dryer
- Tandem car space and storage cage.

View

As advertised or by appointment

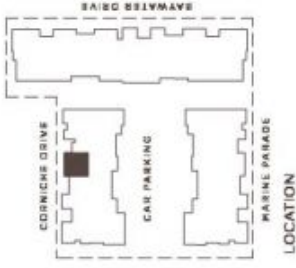
Agent

Morton RE



 rentals@morton.com.au

morton.com.au



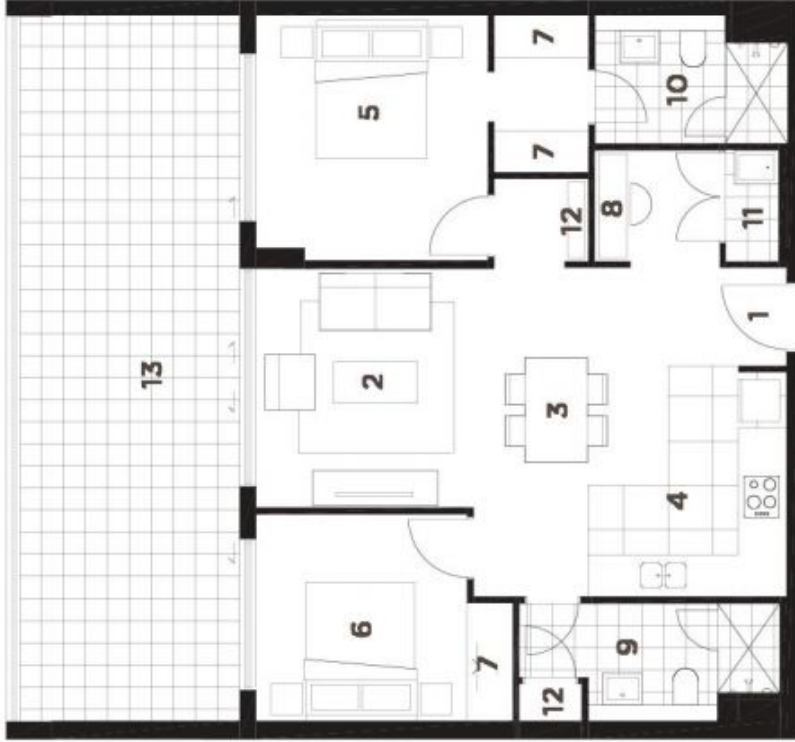
LOCATION

UNIT 407 2 BEDROOM

INTERNAL 76 sqm
BALCONY 23 sqm
TOTAL AREA 99 sqm

KEY:

- 1 Entry
- 2 Living
- 3 Dining
- 4 Kitchen
- 5 Bedroom 1
- 6 Bedroom 2
- 7 Wardrobe
- 8 Study
- 9 Bathroom
- 10 Ensuite
- 11 Laundry
- 12 Store
- 13 Balcony



REV. D



Disclaimer: The purchaser should not be misled by the inclusion of shading patterns and the callouts as to the nature of the unit. All descriptions, dimensions, references to architects and measuring parameters for use and other details are given in good faith and are believed to be correct, but any intending purchaser should not rely on them as statements or representations of fact, but must satisfy themselves by inspection or otherwise of the correctness of all facts, and where necessary seek advice. No third party is responsible for their errors, but any liability is made as per any representation or warranty in relation to this property.

* External areas may be subject to development approvals, refer to the site plan for details.