



**morton.**

**Penrith** 307/8 Aviators Way

 2  2  1

Thornton Central apartments are located on the north side of Penrith train station with uninterrupted park and district views, some with water views towards the picturesque Blue Mountains, situated in the master-planned community Thornton Estate, offering convenient apartment living only metres to Westfield shopping centre, local parks and quality restaurants and cafes.

- North east facing with uninterrupted views towards cricket oval
- Large covered balcony with access to both bedroom and living
- Open living and dining with engineered timber flooring
- LED lighting throughout, reverse-cycle air conditioning
- Entertainers eat-in kitchen with stone bench-tops, soft close cupboards
- Four burner stove top with stainless steel appliances, mirrored splash-back
- MATV and payTV points in living room and bedroom
- Study area and data points, light colour scheme

**morton.com.au**

**View**

As advertised or by appointment

**Agent**

**David Lipman**

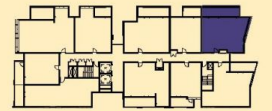
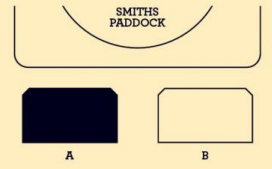
 0409 663 535

 david@morton.com.au

# A307

## BUILDING A

12 2 1



INTERNAL: 77M<sup>2</sup>  
EXTERNAL: 17M<sup>2</sup>  
TOTAL: 94M<sup>2</sup>



DATE ISSUED: 04.11.2015  
VERSION: 01

Developed by **StHilliers** **FIRST POINT PROJECTS** | Sales by **LINK** **Home LandDirect** **THORNTONCENTRAL.COM.AU**

**Disclaimer:** This floor plan has been prepared for marketing purposes only. All descriptions, dimensions, depictions and other details in this floor plan (together, the "Information") may not be to scale. The vendor reserves the right to vary or amend the Information without notice. The Information may vary from the actual dimensions, layout and characteristics of the property as built. No third party has any authority whatsoever, either expressly or impliedly, to make or give any representation or warranty or to bind the vendor in connection with the information or the property.

**Sheffield**  
THORNTON