



**morton.**

**Penrith** 402/101B Lord Sheffield Circuit

 1  1  1

Located in the hub of North Penrith, Thornton Central offers contemporary urban living with quality finishes in a master planned vibrant community called Thornton Estate. Only metres from Penrith train station, Westfield shopping centre and local parks.


- Situated in the Barlow building (a small block of 19 apartments), top floor north facing with sunroof in the kitchen area, unfurnished one bedroom, one bathroom, allocated secure basement parking with storage cage.
- This is the only one bedroom in the building with timber floorboards in the living/dining area filled with natural light from the floor to ceiling windows, including reverse cycle air conditioning and linen cupboard.
- Entertainer's kitchen with stone bench tops, gas cook top, stainless steel Omega appliances, including dishwasher and microwave, soft close kitchen draws and cupboards.
- Efficient LED ceiling downlights, data/TV points in living and bedroom.
- Mirrored cabinets in bathroom with shower head rose, large

#### **View**

As advertised or by appointment

#### **Agent**

**David Lipman**

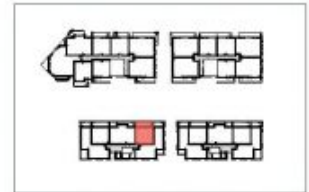
 0409 663 535

 david@morton.com.au

**morton.com.au**



# Apartment B402 1 Bed



Internal	54 m <sup>2</sup>	N
External	14 m <sup>2</sup>	⊗
Total	68 m <sup>2</sup>	

0 2.5 5m

**THORNTON**  
ThorntonCentral.com.au

Disclaimer: This floor plan has been prepared for marketing purposes only. All dimensions, dimensions, descriptions and other details in this floor plan together with the "Information" may not be to scale. The vendor reserves the right to vary or amend the information without notice. The information may vary from the actual dimensions, layout and characteristics of the property as built. No third party has any authority whatsoever either as agent or in any way, to make or give any representation on behalf of or to bind the vendor in connection with the information of the property.  
Dedicated: 23/02/2014. Version: 01