



# morton.

**Penrith** 201/81A Lord Sheffield Circuit


 2  2  1

### View

As advertised or by appointment

### Agent

**David Lipman**

 0409 663 535

 david@morton.com.au

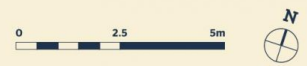
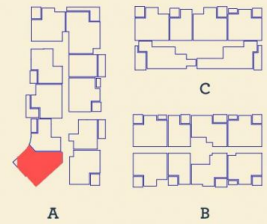
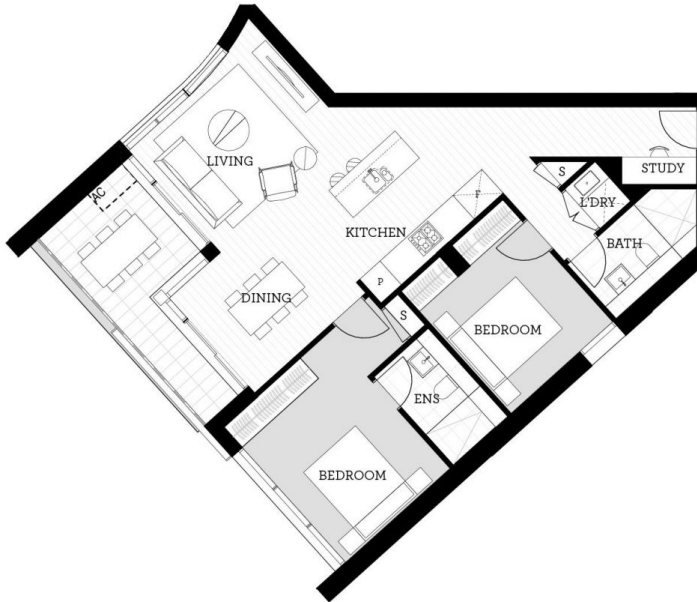
### Features

- Lv 2, 90 sqm, southwest facing, covered balcony,
- Reverse cycle air conditioning in living and bedrooms

[morton.com.au](http://morton.com.au)

*Apartment*

2 BED - A 201



Internal	80 m <sup>2</sup>
External	10 m <sup>2</sup>
<b>Total</b>	<b>90 m<sup>2</sup></b>

DATE ISSUED 27/07/2015  
VERSION 02

Developed by St Hilliers FIRST POINT PROJECTS | Sales by LINK Home Land Direct [thorntoncentral.com.au](http://thorntoncentral.com.au)

**Disclaimer:** This floor plan has been prepared for marketing purposes only. All descriptions, dimensions, depictions and other details in this floor plan together, the "Information" may not be to scale. The vendor reserves the right to vary or amend the Information without notice. The Information may vary from the actual dimensions, layout and characteristics of the property as built. No third party has any authority whatsoever, either expressly or impliedly, to make or give any representation or warranty or to bind the vendor in connection with the information or the property.

**THORNTON**