



morton.

Penrith 7 Nepean Avenue

 5  3  2

Located in arguably Penrith's most exclusive address this commanding home sits on 965m² of land with direct access to the water's edge of the Nepean River. This stunningly designed residence represents a superior combination of style and quality, offering sensational open plan living areas perfect for the entire family.

- 72m² of luxury living with expansive formal and informal living areas
- Undercover alfresco area overlooking infinity pool
- Low maintenance indoor/outdoor living with
- Amazing views overlooking Nepean River and Blue Mountains
- Five large bedrooms all with built-ins, Master room with WIR and ensuite
- Private guestroom with ensuite and external access
- Gourmet kitchen, Miele appliances, steam oven and microwave/combi oven
- Extensive C-Bus control system, Heat-N-Go fireplaces, DAS ducted vacuum system

View

As advertised or by appointment

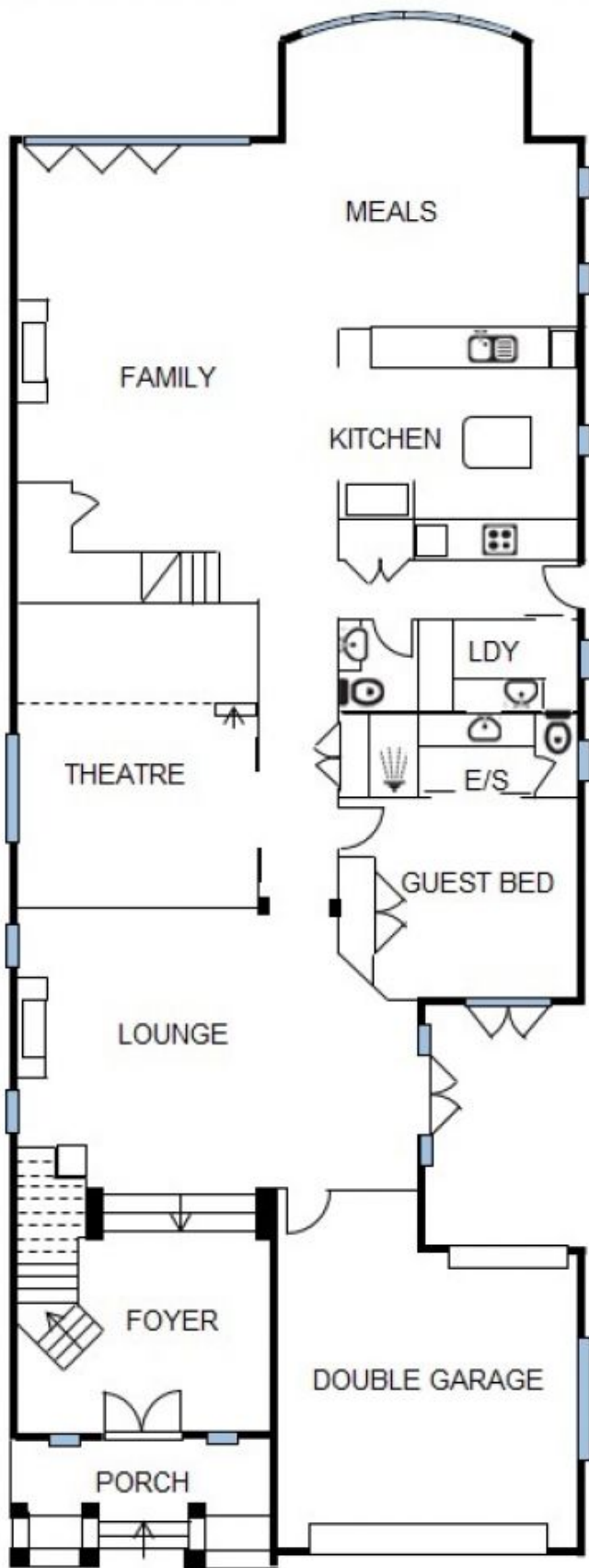
Agent

Ian Ahearn

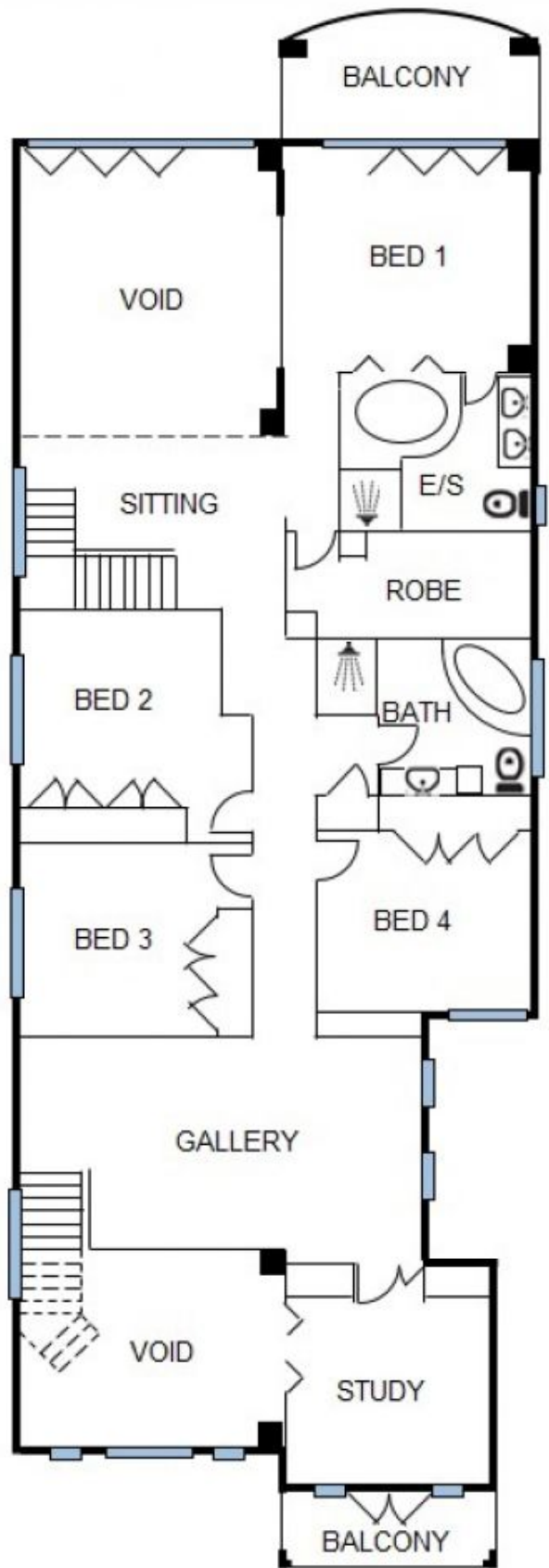
 0457 483 610

 ian.ahearn@morton.com.au

morton.com.au



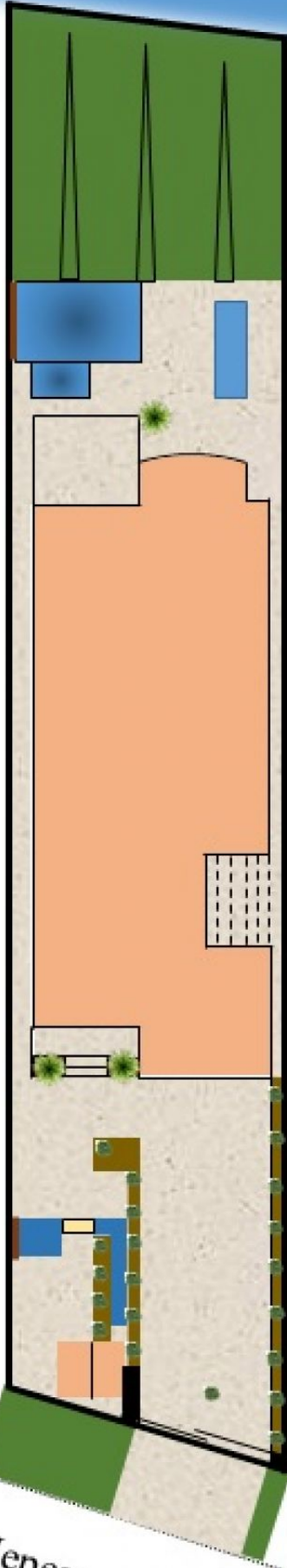
GROUND FLOOR



FIRST FLOOR

Nepean

River



Nepean