



morton.

Wentworth Point 204/16 Corniche Drive

 1  1  1

The Waterfront is located moments to Sydney Olympic Park main venues, train station, Bicentennial Park and Millennium Parklands. Located in Catania, this is your opportunity to move into this one bedroom apartment only a short stroll from The Promenade and The Piazza.

- Apartment located on level two with a great size courtyard
- Combined living and dining rooms
- Split system air conditioning
- Large size open kitchen
- Gas cooking and quality finishes throughout
- Great size bedroom with built-in wardrobe
- Laundry room and clothes dryer
- Single car space and storage care

View

As advertised or by appointment

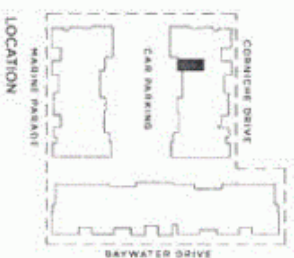
Agent

Morton RE



 rentals@morton.com.au

morton.com.au



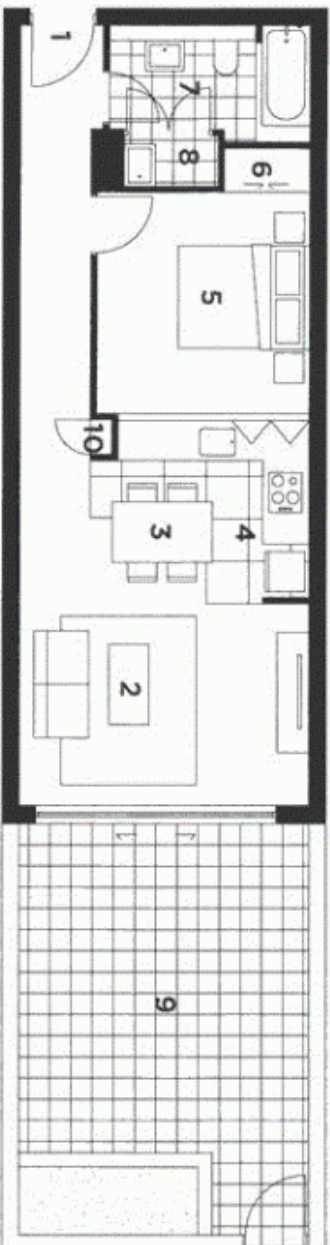
LOCATION

UNIT 204 STUDIO

INTERNAL	50 sqm
COURTYARD	28 sqm
TOTAL AREA	78 sqm

KEY:

- 1 Entry
- 2 Living
- 3 Dining
- 4 Kitchen
- 5 Bedroom
- 6 Wardrobe
- 7 Bathroom
- 8 Laundry
- 9 Courtyard
- 10 Store



CATANIA
THE WATERFRONT

Disclaimer: This architectural plan and all other information herein are for general information only. It is not intended to constitute an offer of any financial product or service. The information contained herein is not intended to be relied upon in making any investment decision. The information contained herein is not intended to be relied upon in making any investment decision. The information contained herein is not intended to be relied upon in making any investment decision. The information contained herein is not intended to be relied upon in making any investment decision.



THE WATERFRONT
WENTHWORTH POINT



REV. D