



**morton.**

**Wentworth Point** 301/3 Stromboli Strait

 2  2  1

Located in Napoli at The Waterfront, here is your opportunity to move into this lovely two bedroom apartment. A short stroll to The Piazza, local restaurants, convenience store, pharmacy, public transport off Hill Road and ferry service to Parramatta and City CBD. The Waterfront is located moments to Sydney Olympic Park main venues and train station, Bicentennial Park and Millennium Parklands.



- Reverse cycle air conditioner
- Large kitchen in very good condition
- Stainless steel appliances including microwave, dishwasher and gas cooking
- Spacious bedrooms
- Secure car space in the basement

**View**

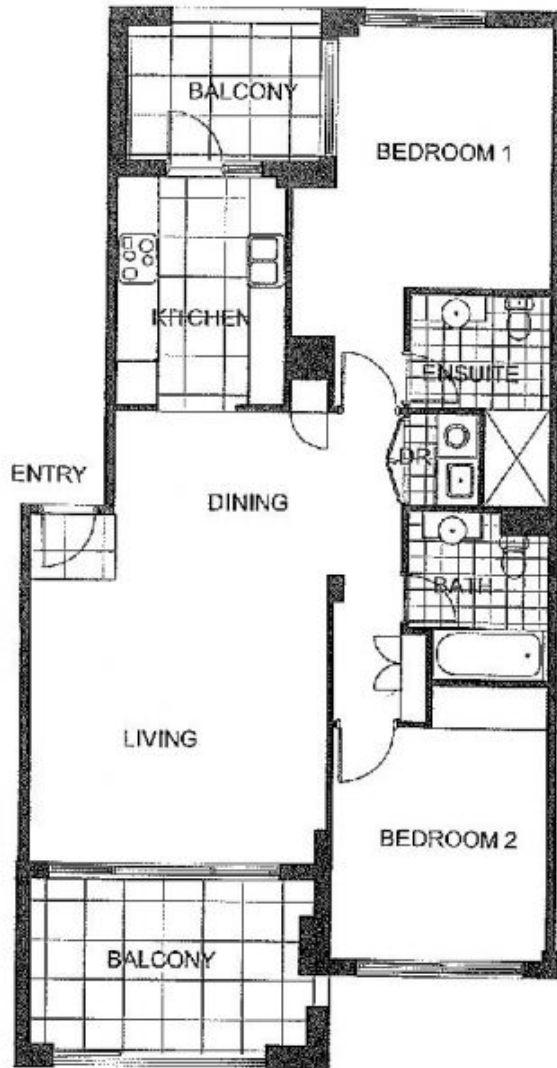
As advertised or by appointment

**Agent**

**Morton RE**

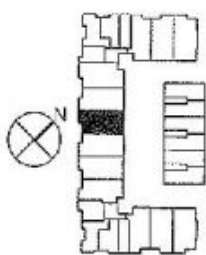
   
 rentals@morton.com.au

**morton.com.au**



0 1 2 3 4 5

\*The information contained herein is intended as an introduction to the general content of the project and is subject to variation. Interested parties should rely on their own enquiries and the contract for sale. The developer reserves the right to vary from these descriptions as it deems necessary or as any relevant authority may require.



LEVEL 3



2 BEDROOM

APARTMENT 301

TYPE C2

INTERNAL AREA 88 sqm

OUTDOOR AREA 16 sqm

TOTAL AREA 106 sqm

NAPOLI