

morton.

Sydney 52/181 Clarence Street

🛏 2 🚿 2 🚗 1

This beautiful unfurnished residence finely balances period elegance and modern sophistication. Reminiscent of a New York warehouse lifestyle, this is an inner city lifestyle offering unrivalled in quality or setting. This is a rare opportunity to experience living in the character filled National Trust listed building 'Broughton House' circa 1890's.

- Freshly painted and Unfurnished
- Lease term 6-12 months minimum
- Large floor plan spanning over 119sqm
- Large and open kitchen with ample storage and integrated Mile appliances.
- Prized NE corner position on level five, bathed in northern light
- Expansive open plan entertaining and study alcove
- Spacious master has an ensuite with double shower and walk-in robe
- Ducted air con, separate laundry, parquet floors
- One car space and large storeroom
- Extremely well proportioned with large picture windows

View

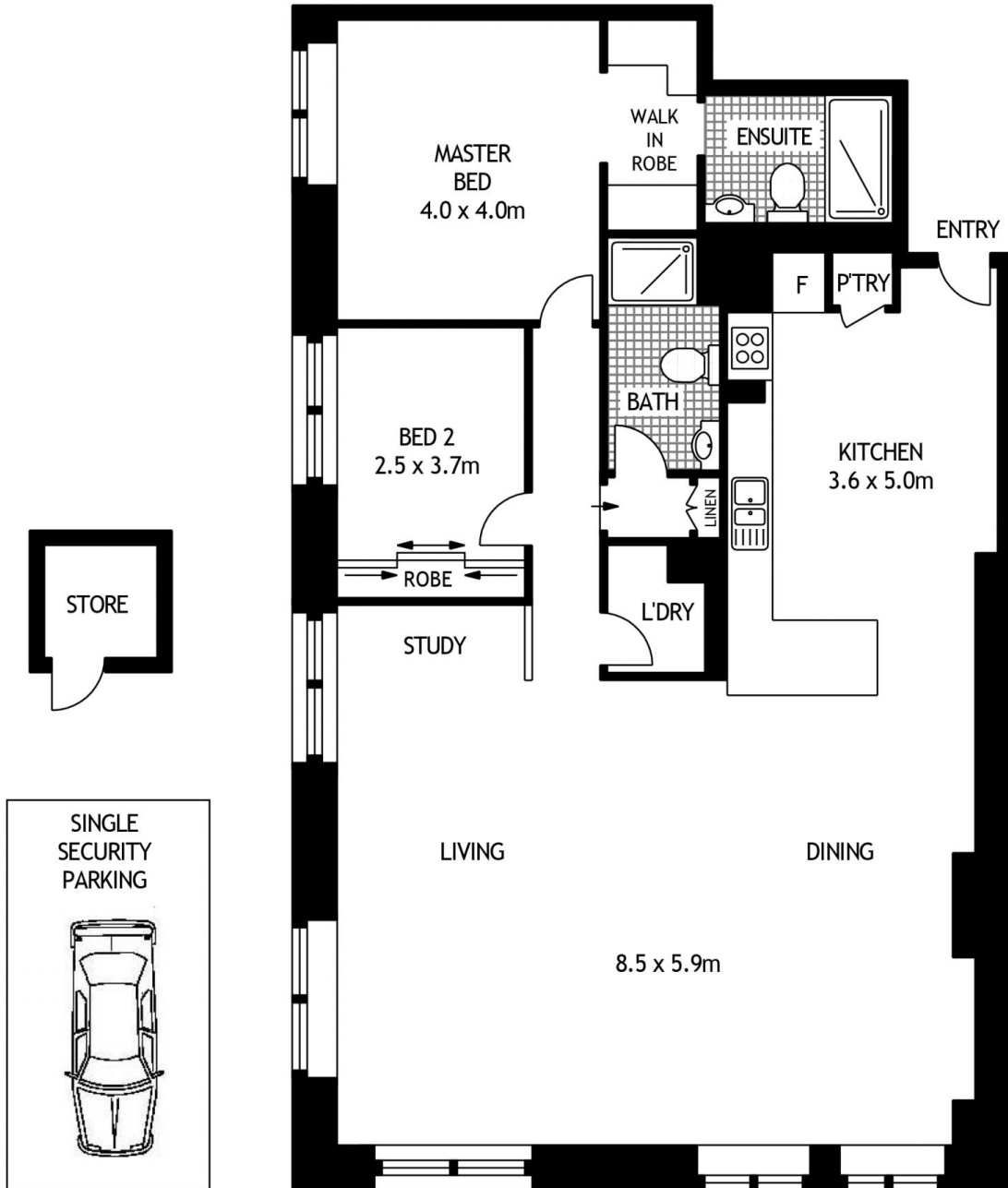
As advertised or by appointment

Agent

Morton RE

📞
✉ rentals@morton.com.au

morton.com.au



FIFTH FLOOR



52/181 CLARENCE STREET

SYDNEY

SCAPE Floor Planing Disclaimer: This floor plan is conceptual only, it is provided for illustrative purposes only and should not be relied upon. We make no guarantees to the correctness of this plan. All interested parties should make and rely on their own enquiries in determining the accuracy of the information contained in this floor plan.