



# morton.

**Haymarket** 3017/65 Tumbalong Boulevard



Deposit taken by Kimberley Edge 0410 593 247

Experience a sense of community in Sydney's newest neighbourhood, "Darling Square". Just completed, this brand new one bedroom plus study nook is an ideal opportunity for professionals looking for style and convenience.

- Well proportioned open design with lounge and dining area
- Designer contemporary kitchen with stone benchtops, gas cooktop and Miele appliances
- Integrated large study nook with built-in shelving
- Master bedroom complete with built-in wardrobes
- On site facilities feature heated swimming pool, BBQ facilities, outdoor gymnasium
- Sun deck, residents pavillion and architecturally designed gardens
- Ducted air conditioning, oak floors, LED lighting and video intercom

### View

As advertised or by appointment

### Agent

**Sarah Fowell**

📞 0437 492 129

✉️ sarah@morton.com.au

[morton.com.au](http://morton.com.au)

# Darling One

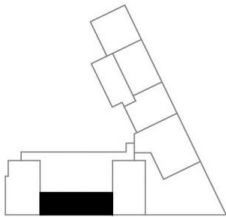
SKYHOMES & APARTMENTS

## LAYOUT PLAN

apartment type H  
apartment no. 1H, 2H, 3H, 4H

|                      |                   |
|----------------------|-------------------|
| bedrooms             | 1                 |
| apartment area       | 52 m <sup>2</sup> |
| balcony area         | 0 m <sup>2</sup>  |
| total apartment area | 52 m <sup>2</sup> |

This plan is an indicative floor plan only, as at April 2014. This plan is a guide only and does not constitute an offer or a contract and is subject to compliance with all laws and regulatory approval from all relevant authorities. All areas, diagrams, dimensions and specifications shown are approximate only and are subject to change or completion of construction. All details are subject to change without notice. Prospective purchasers are encouraged to make their own assessments and seek their own professional advice.



DARLING SQ.  
SYDNEY

**Lend Lease**