



# morton.

**Forest Lodge** 523/8 Grattan Close

 2  2  1

Stylish design, quality finishes and elevated views over the district are combined to great effect in this contemporary Altivolo apartment in the Harold Park community. Set up high in a top floor position, it makes a fresh modern home that is exceptionally private, incredibly convenient and designed for easy low maintenance living.

- Generously proportioned with a bright open plan design
- Floor-to-ceiling walls of glass that enhance light and views
- Good sized balcony and dining space with district outlooks
- Stylish open kitchen with stone benches and Miele appliances
- Two double bedrooms that both have built in wardrobes
- Designer bathroom, internal laundry plus air conditioning
- Secure underground parking plus a lock-up storage cage
- Easy walk to Annandale's Johnston Street and Glebe Point Road

### View



As advertised or by appointment

### Agents

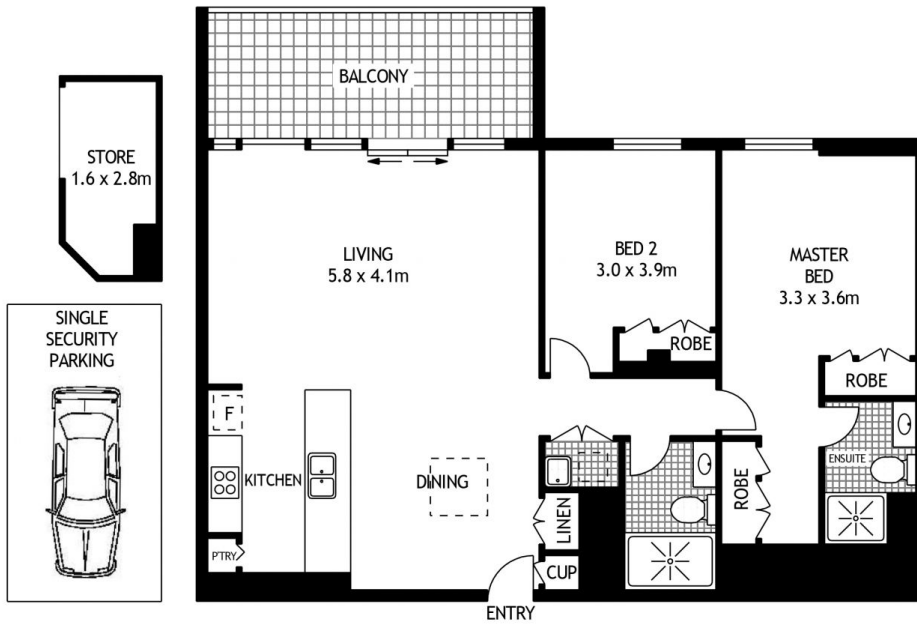
#### Ian Qiu

 0447 696 425  
 [ian@morton.com.au](mailto:ian@morton.com.au)

#### Natasha Giannone

 0438 683 859  
 [natasha@morton.com.au](mailto:natasha@morton.com.au)

[morton.com.au](http://morton.com.au)



LEVEL FIVE



523/8 GRATTAN CLOSE

FOREST LODGE

SCAPE Floor Planing Disclaimer: This floor plan is conceptual only, it is provided for illustrative purposes only and should not be relied upon. We make no guarantees to the correctness of this plan. All interested parties should make and rely on their own enquiries in determining the accuracy of the information contained in this floor plan.